

# BAYÂTÎARABAN PEŞREV

Cinuçen Tanrıkorur

DEVİR-İ KEBİR

The first section of the piece, 'DEVİR-İ KEBİR', is written in 2/8 time and D major. It consists of six staves of music. The notation includes various rhythmic patterns, including eighth and sixteenth notes, and rests. There are two trill ornaments (marked with a '3' and a bracket) in the fourth and fifth staves. The piece concludes with a double bar line.

İkinci Hane

The second section of the piece, 'İkinci Hane', is written in 2/8 time and D major. It consists of six staves of music. The notation includes various rhythmic patterns, including eighth and sixteenth notes, and rests. There are two trill ornaments (marked with a '3' and a bracket) in the fourth and sixth staves. The piece concludes with a double bar line.

### Üçüncü Hane



Musical notation for Üçüncü Hane, consisting of six staves. The key signature is one sharp (F#) and the time signature is 2/4. The notation includes various rhythmic values, accidentals, and trills. Trills are marked with a '3' and a bracket. The piece concludes with a double bar line.

### Dördüncü Hane



Musical notation for Dördüncü Hane, consisting of six staves. The key signature is one sharp (F#) and the time signature is 2/4. The notation includes various rhythmic values, accidentals, and trills. Trills are marked with a '3' and a bracket. The piece concludes with a double bar line.

# BAYÂTÎARABAN MEVLEVÎ ÂYÎN-İ ŞERÎF'İ

DEVR-İ REVAN

Cinuçen Tanrıkorur



EY ÇE RA ĞI A SÜ MA NÜ RAH ME Tİ HAK BER ZE MİN



HEY Yİ HEY SUL TA NI MEN HEY Yİ HEY HÜN KÂ RI MEN



NA LE İ MEN GU ŞI DA RÜ DER Dİ HA Lİ MEN Bİ BİN



HEY Yİ HEY SUL TA NI MEN HEY Yİ HEY HÜN KÂ RI MEN



BAZ E LEM NEŞ RAH RE VAN KÜN ÇA RI CU DER Sİ NE EM



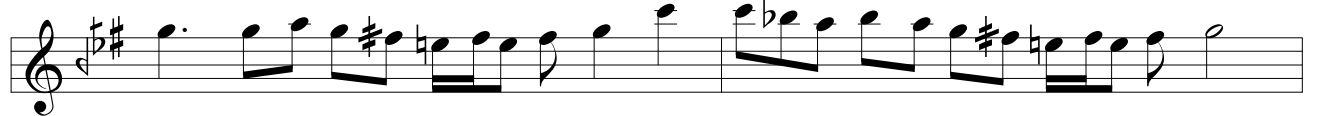
HEY Yİ HEY SUL TA NI MEN HEY Yİ HEY HÜN KÂ RI MEN



CU Yİ A BÜ CU Yİ HAM RÜ CU Yİ Şİ RÜ EN GÜ BİN



HEY Yİ HEY RA NA YI MEN HEY Yİ HEY Zİ BA YI MEN



İM RU Zİ Çİ RU ZES Tİ Kİ HUR



Şİ Dİ DÜ TAST HEY Yİ HEY MAH BU Bİ MEN



İM RU Zİ Zİ RUZ HA Bİ RU

NES TÜ CÜ DAST HEY Yİ HEY MAK BU Lİ MEN  
EZ ÇER Hİ BE HA Kİ YAN Nİ SA  
RES TÜ SA DAST HEY Yİ HEY RA NA YI MEN  
KEY DİL ŞÜ DE GÂN MÜJ DE Kİ İN  
RU Zİ ŞÜ MAST HEY Yİ HEY Zİ BA YI MEN  
MA DER DÜ Cİ HAN GAY Rİ HU DA YAR  
YA Rİ NE DA RİM DOST DOST NE DA RİM  
CÜZ YA DI HU DA Hİ Çİ Dİ GER KÂR  
KÂ RI NE DA RİM DOST DOST NE DA RİM  
MÜŞ TA KI Dİ LÜ CA NI TÜ ŞEM SÜL HA KI TEB RİZ  
MÜŞ TA KI Dİ LÜ CA NI TÜ ŞEM SÜL HA KI TEB RİZ  
DER A Yİ NE CÜZ VA YE İ Dİ DAR

DA RI NA DA RİM DOST DOST NE DA RİM

### İKİNCİ SELÂM

EVFER

AH SUL DER TA MEN NI Bİ ME Nİ DE Mİ  
Nİ Mİ SUL MEN TA ZİN NI DE ME Nİ ŞE VEM  
( Saz ) EN YEK DER CAN Dİ Çİ LÜ CAN ŞE VED  
CAN VED İ SAD MA CA NI NI ME Nİ ME Nİ  
AH İ MA NI ME Nİ

Musical notation for the first part of the piece, consisting of five staves of music in a 14/4 time signature. The notation includes various rhythmic values and accidentals.

### ÜÇÜNCÜ SELÂM

#### DEVİR-İ KEBİR

Musical notation for the 'DEVİR-İ KEBİR' section, consisting of seven staves of music with lyrics in Turkish. The notation includes various rhythmic values and accidentals.

İL Tİ CA Yİ MA BE ŞA HI  
EV Lİ YAST BE Lİ YA Rİ MEN  
ZAN Kİ NU REŞ MÜŞ TAK EZ NU  
Rİ HU DAST BE Lİ YA Rİ MEN  
EY Kİ DA Rİ Dİ DE İ RU  
ŞEN Bİ BİN BE Lİ YA Rİ MEN  
CİS MÜ CA NEŞ CİS MÜ CA NI



MUS TA FAST



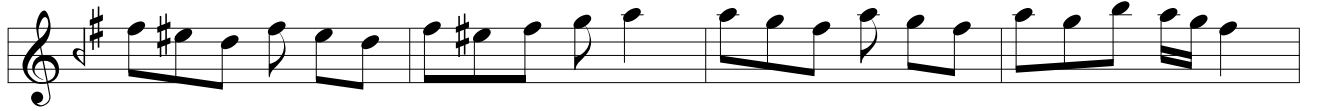
EY Kİ HE ZAR A FE RİN AH BU Nİ CE SUL TAN O LUR  
HER Kİ BU GÜN VE LE DE AH İ NA NUBEN YÜZ SÜ RE



YA Rİ YAR KU LI O LAN Kİ Şİ LER CA NIM HUS RE VÜ HA  
YA Rİ YAR YOK SUL İ SE BAY O LUR CA NIM BAY İ SE



KAN O LUR AH HUS RE VÜ HA KAN O LUR  
TAN O LUR AH BAY İ SE SUL TAN O LUR



EY KA Fİ LE İ KA LE İ TA A TI KÜ CA YİD



EN DER HA RE Mİ KIB LE İ HA CA TI Bİ YA YİD

HEM HA NE VÜ HEM SA YE İ Dİ VA RI BE Dİ VAR

SER GEŞ TE BE YA BA NI ŞÜ MA Yİ Dİ ŞÜ MA YİD

BE HAK KI AN Kİ DER İN DİL BE CÜZ VE LA Yİ TÜ NİST

VE LİY Yİ O NE ŞE VEM KÛ Zİ EV Lİ YA Yİ TÜ NİST

ME BAD CA NEM Bİ GAM E GER FE DA Yİ TÜ NİST

ME BAD ÇEŞ MEM RU ŞEN E GER SA KA Yİ TÜ NİST

EY

DİL BU YE TER İ Kİ Cİ HAN DE SA NA İZ AN BİR

DİR BİR İ Kİ OL MA YA YOK BİL MİŞ OL İM KÂN HAK



SÖY LE Yİ CEK SEN DE DE NİN OR TA DA NEN VAR A  
LEM DE HE MAN BEN DE Dİ ĞİN DİR SA NA NOK SAN SA'Y  
LEY LE RI ZA GÖZ LE KO IT LAK İ LE KAY DI A  
LEM DE SE MA İ BU YE TER SA Lİ KE İR FAN

## DÖRDÜNCÜ SELÂM

EVFER

AH SUL TA NI ME Nİ  
DER MEN Bİ DE Mİ  
Nİ SUL TA NI ME Nİ  
Mİ MEN ZİN DE ŞE VEM  
( Saz ) EN DER Dİ LÜ CAN  
YEK CAN Çİ ŞE VED  
CAN İ ME NI ME Nİ  
VED SAD CA NI ME Nİ  
AH İ MA NI ME Nİ

## SON PEŞREV

### DÜYEK



Musical notation for the piece "SON PEŞREV" in the "DÜYEK" style. It consists of three staves of music in the key of D major (one sharp) and 2/4 time. The first staff begins with a treble clef, a key signature of one sharp, and a common time signature. The music features a series of eighth and sixteenth notes, with a repeat sign at the beginning. The second staff continues the melodic line with similar rhythmic patterns. The third staff concludes the piece with a final cadence and a double bar line.

## SON YÜRÜK

### YÜRÜK SEMÂÎ



Musical notation for the piece "SON YÜRÜK" in the "YÜRÜK SEMÂÎ" style. It consists of four staves of music in the key of D major (one sharp) and 2/4 time. The first staff begins with a treble clef, a key signature of one sharp, and a common time signature. The music features a series of eighth and sixteenth notes, with a repeat sign at the beginning. The second staff continues the melodic line with similar rhythmic patterns. The third staff concludes the piece with a final cadence and a double bar line.