

BÛSELİKAŞİRAN PEŞREV

DEVİR-İ KEBİR

Neyzen Emin Dede

The first section of the piece, 'DEVİR-İ KEBİR', is written in 14/4 time. It consists of three staves of music. The first staff begins with a treble clef and a 14/4 time signature. The melody is composed of eighth and sixteenth notes, with some rests. The second and third staves continue the melody, featuring various rhythmic patterns and accidentals.

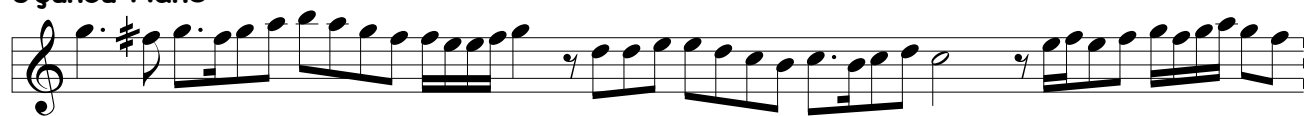
§ TESLİM

The second section, 'TESLİM', is marked with a section symbol (§) and consists of three staves of music. The first staff begins with a treble clef and a section symbol (§). The melody is composed of eighth and sixteenth notes, with some rests. The second and third staves continue the melody, featuring various rhythmic patterns and accidentals.

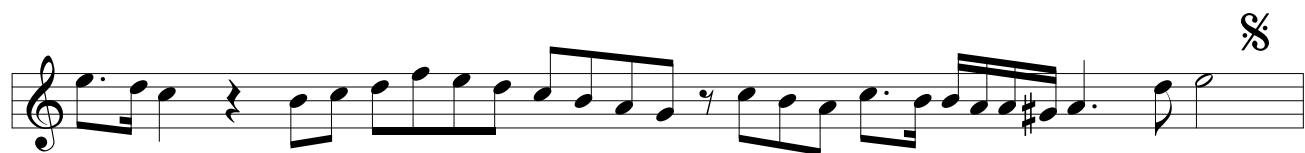
İkinci Hane

The third section, 'İkinci Hane', consists of three staves of music. The first staff begins with a treble clef. The melody is composed of eighth and sixteenth notes, with some rests. The second and third staves continue the melody, featuring various rhythmic patterns and accidentals. The piece concludes with a section symbol (§) at the end of the third staff.

Üçüncü Hane



Dördüncü Hane



BÛSELİKAŞİRAN MEVLEVÎ ÂYİN-İ ŞERİF'İ

DEVRİ REVAN

Ahmed Avni Konuk

MEN A ŞI KI AŞ KI O ŞÜ DE A
ŞI KI MEN HEY Yİ YAR CA NI MEN CA NA NI MEN
TE Nİ A ŞI KI CAN A ME DÜ CAN A
ŞI KI TEN HEY Yİ YAR CA NI MEN CA NA NI MEN
GE Hİ MEN A REM DÜ DES Tİ DER GER
DE Nİ O HEY Yİ YAR CA NI MEN CA NA NI MEN
GE Hİ O KE ŞE DEM ÇÜ DİL RÜ BA YAN
GER DEN HEY Yİ YAR CA NI MEN CA NA NI MEN
EY CEB RE İL EZ A SÜ MAN
EZ AŞ KI TÜ PA GÛ FÜ TE
VEY EN CÛ MÜ ÇER Hİ FE LEK

EN DER HE VA PA GÜ FÜ TE

EN DER HA RA BA Tİ FE NA

ŞA HEN ŞE HA NÎ MUH TE ŞEM

HEM Bİ GÜ LE SER VER ŞÜ DE

HEM Bİ KA BA PA GÜ FÜ TE

ES HA Bİ KİB RÜ NEF Sİ KEY

BA ŞEN Dİ LÂ YIK ŞA HI RA

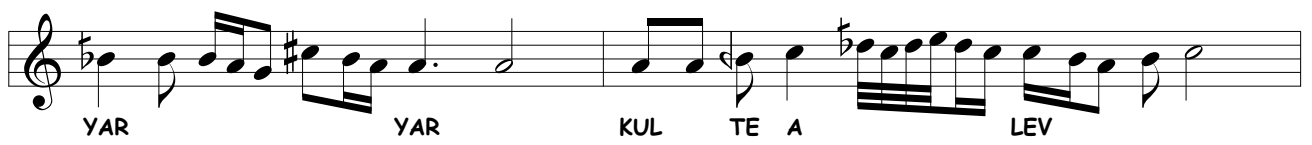
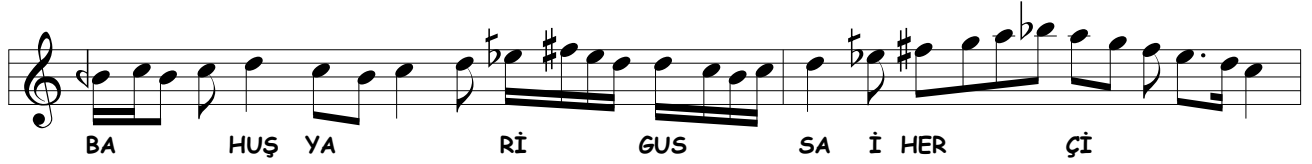
KEZ İZ ZE Tİ İN ŞA HI MA

SAD KİB Rİ YA PA GÜ FÜ TE

HEY YA Rİ MEN HEY Mİ Rİ MEN

AH Pİ Rİ MEN CA NA NI MEN

A ŞIK HE ME SÂ Lİ MES TÜ RÜS VA



YAR MA Zİ CEZ Bİ HAK TE A
LÂ Mİ RE VİM YAR YAR

İKİNCİ SELÂM

EVFER

EY MUT MUT RI BAN
BAN EY MUT MUT RI BAN
BAN KÛ AN AN SE MA
(Saz) İ CAN CAN FE ZA
AH EY SA SA KI YAN
YAN EY SA SA KI YAN
YAN KÛ AN A AN ŞE RA
(Saz) Bİ GAM GAM ZÛ DA
AH EY A A Şİ KAN

KAN EY A A A ŞI KAN
(Saz) MA ŞU ŞU KI RA
RA DER BER KE ŞİD
AH EY HA HA ZI RAN
RAN EY HA HA ZI RA
RAN GA FİL FİL ME BA
(Saz) ŞİD EZ EZ HU DA

ÜÇÜNCÜ SELÂM

DEVRİ KEBİR

MA BE HAR MEN GÂ Hİ CAN BAZ

A ME DİM BE Lİ YA Rİ MEN

CA Nİ Bİ ŞEH HEM ÇÜ ŞEH BAZ

A ME DİM BE Lİ YA Rİ MEN

VA RE Hİ DİM EZ GE DA Yİ

VÜ Nİ YAZ BE Lİ YA Rİ MEN

PA Yİ KÜ BAN CA Nİ Bİ NAZ

A ME DİM BE Lİ YA Rİ MEN

A ME DİM BE Lİ YA Rİ MEN



ŐEM Sİ ME NÜ HU DA YI MEN YAR YAR



HER



RU Zİ BE NEV BE RA YED İN DİL BE Rİ AŐK AŐK AŐK
GER DE Nİ MA DE REF KE NED DEF TE Rİ AŐK AŐK



YAR YAR EY YA Rİ MEN VAY DER VAY İN
YAR YAR EY YA Rİ MEN



HA Rİ E ZAN Nİ HA Dİ HAK BER DE Rİ AŐK



AŐK YAR EY YA Rİ MEN VAY TA



DU Rİ ŐE VED HER Kİ NE DA RED SE Rİ AŐK



AŐK YAR EY YA Rİ MEN VAY



YAR YÜ RE ĞİM DEL Cİ ĞE RİM GÖR Kİ NE LER VAR



AH YA RE HA BER VAR YAR YÜ RE ĞİM



DEL Cİ ĞE RİM GÖR Kİ NE LER VAR

AH YA RE HA BER VAR

EY

MAK SA DI A ŞI KİN O LAN MEV LA NA

YAR YAR YA Rİ YA Rİ MEN VEY

NEŞ E İ MÜ Mİ NİN O LAN MEV LA NA

YAR YAR YA Rİ YA Rİ MEN BÎ

ÇA RE LE RİZ HA Lİ Mİ ZE RAH MEY LE

YAR YAR YA Rİ YA Rİ MEN BÎ

ÇA RE LE RE MU İN O LAN MEV LA NA

YAR YAR YA Rİ YA Rİ

DÖRDÜNCÜ SELÂM

EVFER

MEN EY A A ŞI KAN

KAN EY A A ŞI KAN

KAN A MED GE Hİ VAS

(Saz) LÜ LÜ Lİ KA

AH A MED MED Nİ DA

DA EZ A A SÜ MAN

MAN KEY MA MA HI RU

(Saz) YAN ES ES SA LÂ

SON PEŞREV

DÜYEK

The image displays a musical score for a piece titled "SON PEŞREV" in the "DÜYEK" style. The score is written on 11 staves of music, each beginning with a treble clef, a key signature of one sharp (F#), and a 2/4 time signature. The music is characterized by a series of eighth and sixteenth notes, often beamed together, creating a rhythmic and melodic pattern. The notation includes various note values, rests, and accidentals (sharps and naturals). The piece concludes with a double bar line and a final chord symbol, a G major triad (G-B-D).

SON YÜRÜK

YÜRÜK SEMÂÎ

