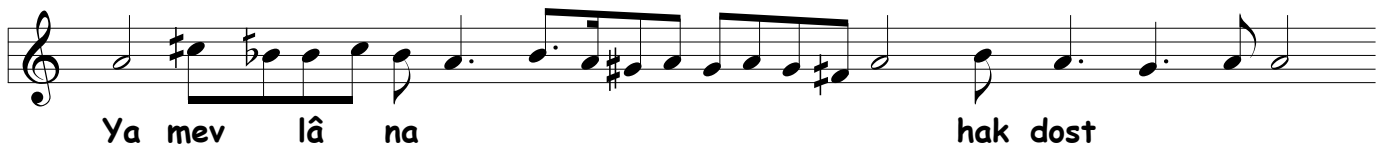
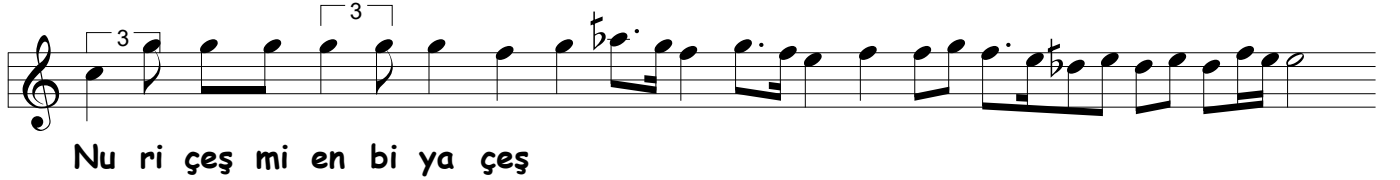
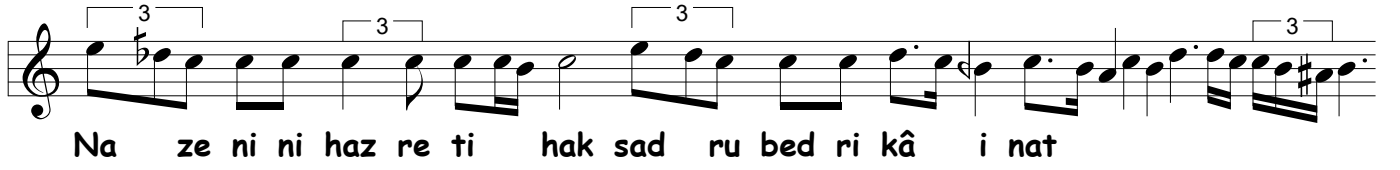
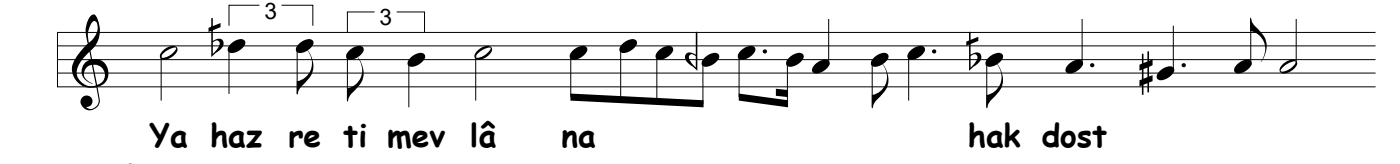
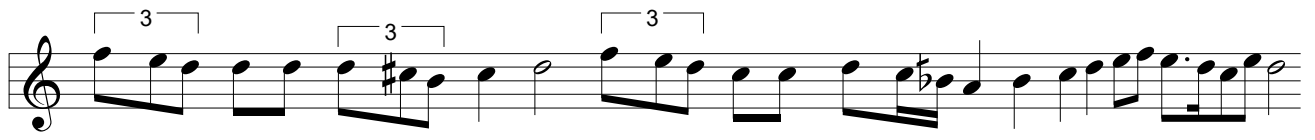


DÜĞÂH NA'T-İ MEVLÂNÂ

Güfte: Hz. Mevlânâ
Beste: Kemal BATANAY

Serbest

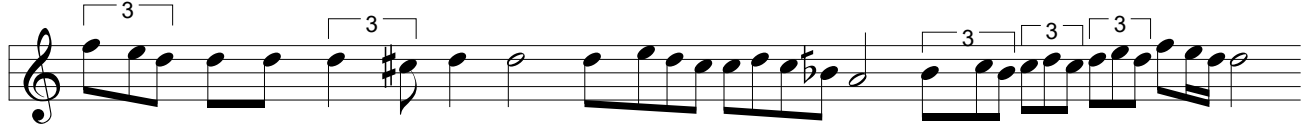




Der şe bi mi ra ci bu de ceb re il en der ri kâ



kâb dost dost



Pa ni ha de ber se ri nüh nüh nüh



kün be di had ra tū yi



yi



Ya mev lâ na hak dost



Sul ta ta nim



mah bu bi men



dost dost dost



Ya re su lal lah tū da ni üm me ta net a ci zend



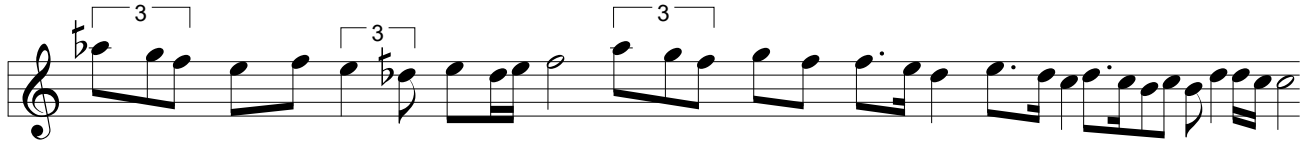
Reh nū ma yi a ci ze ni bi se rü bi pa tū yi



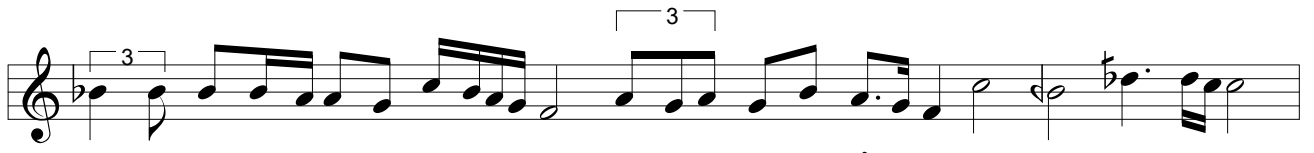
hak dost dost



sul ta ta nı nım



Ser vi bos ta nı ri sa let nev ba ha rı ma ri fet



gül bü ni ba ğı şe ri at bül bü lü ba lâ tū yi



yi



ya ve liy yal lah dost hey



Şem si teb ri zi ki da red na' ti pey gam ber zi ber



ber



Mus ta fa vü müc te ba an sey yi di a lâ tū yi



yi



ya ta bi bel ku lûb



ya ve liy yal lah al lah dost dost