

# FERAHNÂK PEŞREV

DEVR-İ KEBİR

Zeki Mehmet Ağa

The first section of the piece, 'Devr-i Kebir', is written in treble clef with a key signature of two sharps (D major) and a 2/8 time signature. It consists of six staves of music. The melody is characterized by a series of eighth and sixteenth notes, creating a rhythmic and melodic pattern. The notation includes various note values, rests, and bar lines, indicating the structure of the piece.

İkinci Hane

The second section of the piece, 'İkinci Hane', is written in treble clef with a key signature of two sharps (D major). It consists of six staves of music. The melody continues from the first section, maintaining the same rhythmic and melodic patterns. The notation includes various note values, rests, and bar lines, indicating the structure of the piece.

Üçüncü Hane



Musical notation for Üçüncü Hane, consisting of six staves of music in G major (one sharp). The notation includes various rhythmic values such as eighth and sixteenth notes, rests, and bar lines. The piece concludes with a double bar line.

Dördüncü Hane



Musical notation for Dördüncü Hane, consisting of six staves of music in G major (one sharp). The notation includes various rhythmic values such as eighth and sixteenth notes, rests, and bar lines. The piece concludes with a double bar line.

# FERAHNÂK MEVLEVÎ ÂYÎN-İ ŞERÎF'İ

Sermüezzin Rif'at Bey

DEVİR-İ REVAN

MA RA Zİ AŞ KI CA NAN ES RA RI DİL A YA NEST  
HEY Yİ HEY YAR GER Çİ BER EH Lİ SU RET  
MA NA YI AN Nİ HA NEST HEY Yİ HEY YAR  
Pİ Rİ MEN GER ZAN Kİ MER Dİ RA Hİ  
HA Hİ CE MA Lİ CA NAN HEY Yİ HEY YAR  
EZ SID KI DİL TA LEB KÜN Kİ CA Yİ İM Tİ HA NEST  
HEY Yİ HEY YAR Pİ Rİ MEN  
EY SAN CA KI NAS RUL LAH VEY MEŞ A LE İ YA SİN  
HEY Yİ HEY YAR YA RAB Çİ SE BÜK RU Hİ  
BER ÇEŞ MÜ SE REM BİN ŞİN HEY Yİ HEY YAR  
Pİ Rİ MEN EY TA CI HÜ NER MEN Dİ



Mİ RA CI HI RED MEN Dİ HEY Yİ HEY YAR



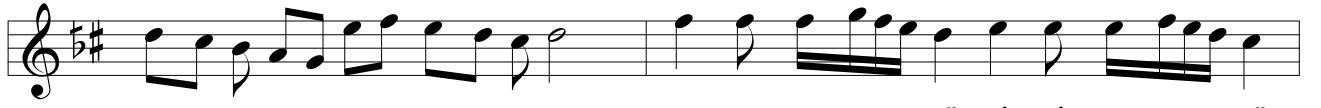
TA RİF NE Mİ BA YED ÇÜN CÜM LE TÜ Yİ TA YİN



HEY Yİ HEY YAR Pİ Rİ MEN



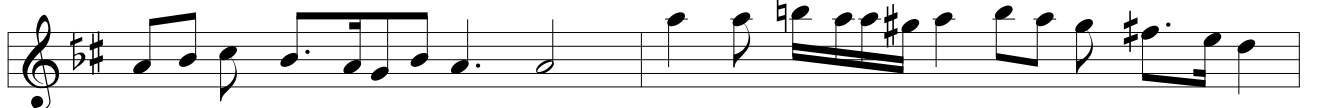
DU Şİ DER MEH TA BI Dİ DEM MEC Lİ Sİ EZ DU Rİ MEST



HEY YAR TIF LI MES TÜ Pİ Rİ MES TÜ



MUT RI Bİ TAN BU Rİ MEST HEY Yİ HEY YAR



Pİ Rİ MEN MA Hİ DA DE A SÜ MAN RA



CÜR A İ ZAN CA MI MEY HEY Yİ HEY YAR



MA Hİ MES TÜ MİH Rİ MES TÜ SA YE MES TÜ NU Rİ MEST



HEY Yİ HEY YAR Pİ Rİ MEN



MAH BU Bİ MEN MER GU Bİ MEN



MAT LU Bİ MEN YA Rİ HEY MAK BU Lİ

# İKİNCİ SELÂM

-3-

EVFER

MEN BA HAR A MED  
AH HO ŞU SER SEB

AH BA HAR A MED  
SEB Zİ ŞÜD A LEM

MED BA HA HA RI HOŞ  
LEM E VA VA NI LÂ

HOŞ İ ZAR A MED  
LÂ LE ZAR A MED

AH Zİ SÛ SEN BİŞ

NEV EY REY HAN

Kİ SÛ SEN DEH

ZE BAN DA RED

AH BE DEŞ Tİ A

A BU GİL BİN GER

Kİ PÜR NAK ŞU

ŞU Nİ GÂR A MED

Musical score for the first part of the page, consisting of five staves of music in G major and 14/4 time signature.

## ÜÇÜNCÜ SELÂM

### DEVİR-İ KEBİR

Musical score for the 'DEVİR-İ KEBİR' section, consisting of eight staves of music with lyrics in Turkish.

A ŞIK ŞÜ DE İ EY CAN  
SEV DAT MÜ BA REK BAD  
EZ KEV NÜ ME KÂN RES Tİ  
AN CAT MÜ BA REK BAD  
EZ HER DÜ Cİ HAN BİG ZER  
TEN HA ZE NÜ TEN HA HOR  
TA MÜL KÜ ME LEK GÜ YED



TEN HAT MÜ BA REK BAD



EY Kİ HE ZAR A FE RİN AH BU Nİ CE SUL TAN O LUR  
HER Kİ BU GÜN VE LE DE AH İ NA NUBEN YÜZ SÜ RE



KU LI O LAN Kİ Şİ LER CA NİM HUS RE VÜ HA  
YOK SUL İ SE BAY O LUR CA NİM BAY İ SE SUL



KAN O LUR HUS RE VÜ HA KAN O LUR  
TAN O LUR BAY İ SE SUL TAN O LUR



ŞA HI MA ŞA HİST NA MEŞ MUR TE ZAST



HER DÜ A LEM ŞA HI MA Şİ Rİ HU DAST



MUS TA FA RA GAY RE ZO HEM DEM ME DAN



DER HA Kİ KAT RA Zİ DA Rİ MUS TA FAST



ŞEM Sİ TEB Rİ Zİ TÜ HEM DA NİS TE İ



Dİ Nİ MA YA MUS TA FA YA MUR TE ZAST



SE MA A RA MI CA NI Bİ KA RA REST



SE BÜK BER CEH Çİ CA Yİ İN Tİ ZA REST



ÇÜ MER Dİ CENG BAN Gİ TAB LI BİŞ NİD



DER AN SA AT HE ZAR EN DER HE ZA REST



ŞE Nİ Dİ TAB LI BER KEŞ ZUD ŞEM ŞİR



Kİ CA NI TÜ Gİ LÂ Fİ ZÜL Fİ KÂ REST



HÜ SEY Nİ KER BE LÂ Yİ AB BİG ZAR





Kİ A BI İM RÛZ TÎ Gİ AB DA REST  
FE DA KÛN CA NI TÛ ŞEM Sİ Dİ Nİ TEB RİZ  
E GER CA NI TÛ EZ HAK KÂ MI KÂ REST

## DÖRDÜNCÜ SELÂM

EVFER



AH SUL DER TA MEN NI ME Nİ  
Bİ DE Mİ  
Nİ MI SUL MEN TA ZİN NI ME Nİ  
DE ŞE VEM  
AH AH EN YEK DER CAN Dİ LÜ CAN  
Çİ ŞE VED  
CAN VED İ SAD MA NI ME Nİ  
CA CA NI ME Nİ

## SON PEŞREV

### DÜYEK

Musical notation for the 'DÜYEK' section, consisting of eight staves of music in a single system. The notation is in treble clef with a key signature of one sharp (F#) and a 2/4 time signature. The music features a variety of rhythmic patterns, including eighth and sixteenth notes, and rests. The piece concludes with a double bar line and a final cadence.

## SON YÜRÜK

### YÜRÜK SEMAİ

Musical notation for the 'SON YÜRÜK' section, consisting of two staves of music in a single system. The notation is in treble clef with a key signature of one sharp (F#) and a 2/4 time signature. The music features a variety of rhythmic patterns, including eighth and sixteenth notes, and rests. The piece concludes with a double bar line and a final cadence.

