

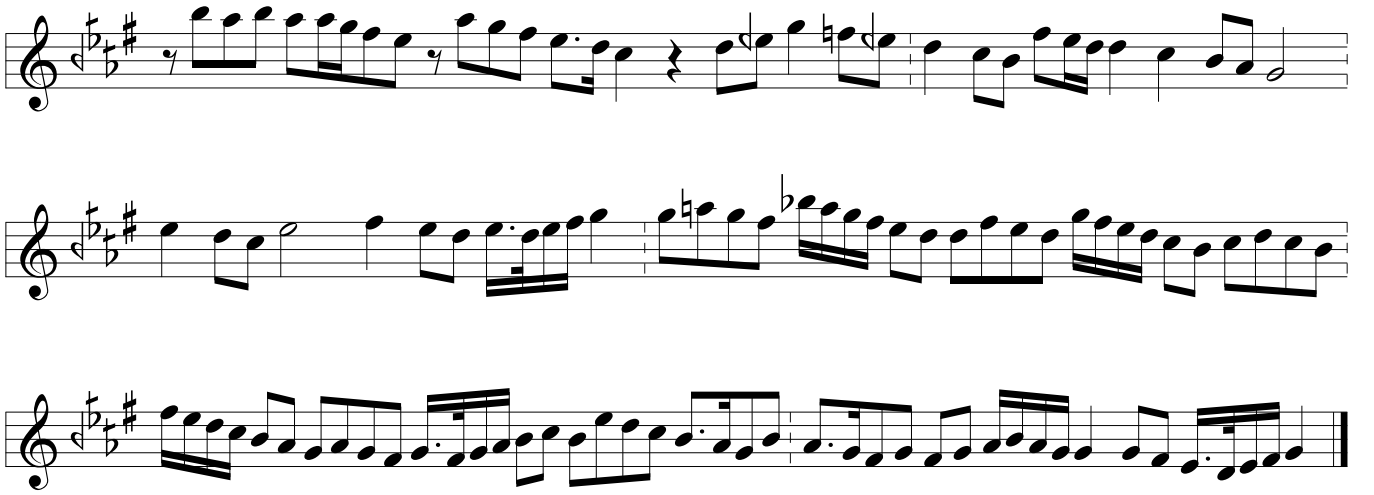
HİCAZKÂR PEŞREV

Ahmet ÇALIŞIR

DEVİR-İ KEBİR



§ TESLİM



İkinci Hane



Üçüncü Hane



Musical notation for Üçüncü Hane, consisting of three staves. The first staff begins with a treble clef, a key signature of one sharp (F#), and a 3/4 time signature. The melody is written in a single line with various note values and rests. The second staff continues the melody. The third staff concludes the piece with a double bar line and a fermata symbol.

Dördüncü Hane



Musical notation for Dördüncü Hane, consisting of three staves. The first staff begins with a treble clef, a key signature of one sharp (F#), and a 3/4 time signature. The melody is written in a single line with various note values and rests. The second staff continues the melody. The third staff concludes the piece with a double bar line and a fermata symbol.

HICAZKÂR MEVLEVÎ ÂYÎN-İ ŞERÎF'İ

BİRİNCİ SELÂM

Devr-i Revân

Ahmet ÇALIŞIR

İN SE MA I MEV LE VÎ MES MÛ (İ) BA DA TA E BED

HEY Yİ YAR HEY Yİ DOST CA NI MEN CA NA NI MEN

VİN Lİ VA İ MA NE VÎ MER FÛ (İ) BA DA TA E BED

HEY Yİ HEY SUL TA NI MEN HEY Yİ HEY HÛN KÂ RI MEN

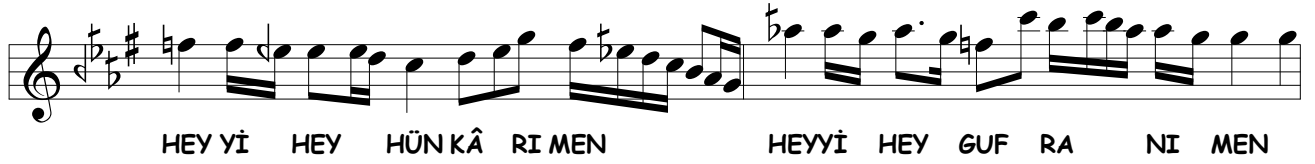
Â ŞI KA NI FEY Zİ HAK RA İC Tİ MA U İS Tİ MA

HEY Yİ YAR HEY Yİ DOST CA NI MEN CA NA NI MEN

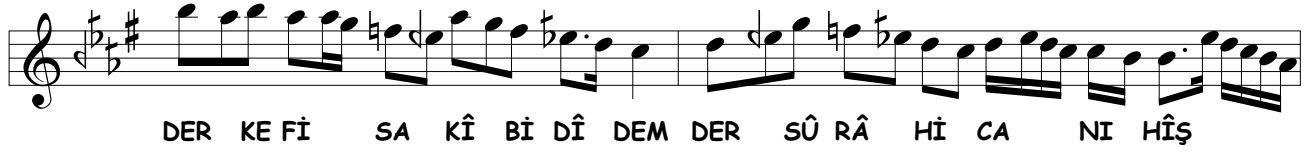
İN SE MA I MEV LE Vİ MES MU İ BA DA TA E BED

HEY Yİ HEY SUL TA NI MEN HEY Yİ HEY HÛN KÂ RI MEN

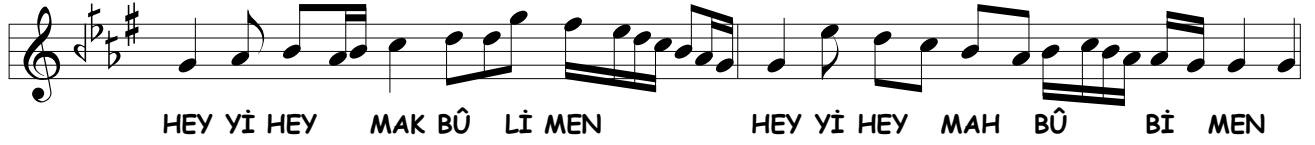
DÛŞ (İ) REF TEM DER ME YA NI MEC Lİ Sİ SUL TA NI HÎŞ



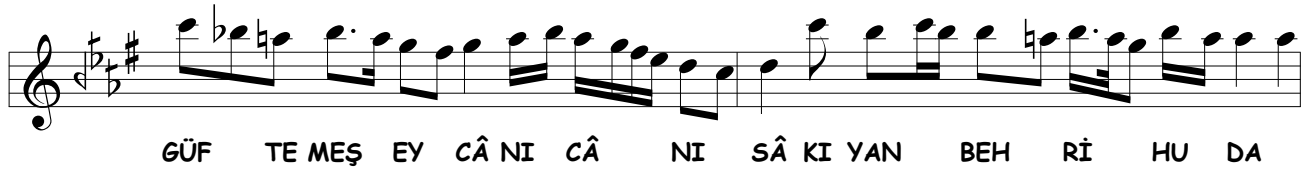
HEY Yİ HEY HÜN KÂ RI MEN HEYYİ HEY GUF RA NI MEN



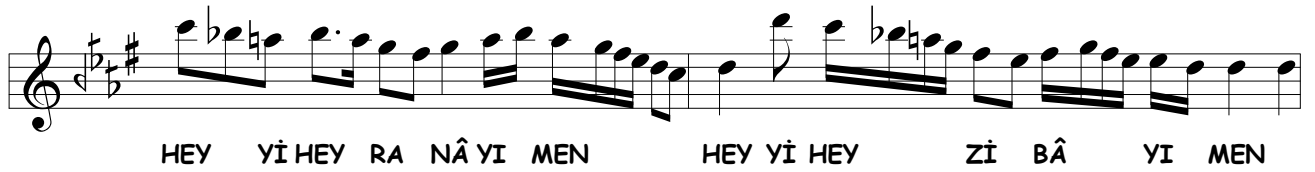
DER KE Fİ SA KÎ Bİ DÎ DEM DER SÛ RÂ Hİ CA NI HÎŞ



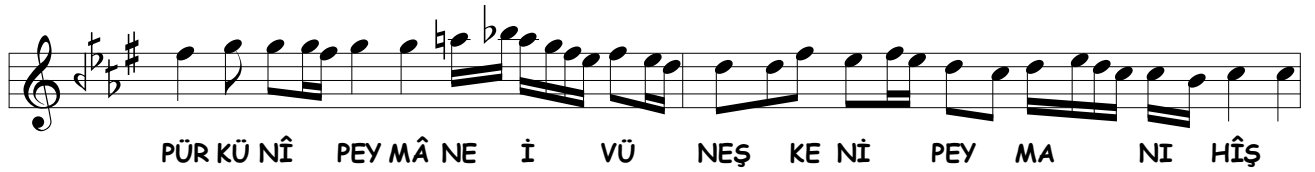
HEY Yİ HEY MAK BÛ Lİ MEN HEY Yİ HEY MAH BÛ Bİ MEN



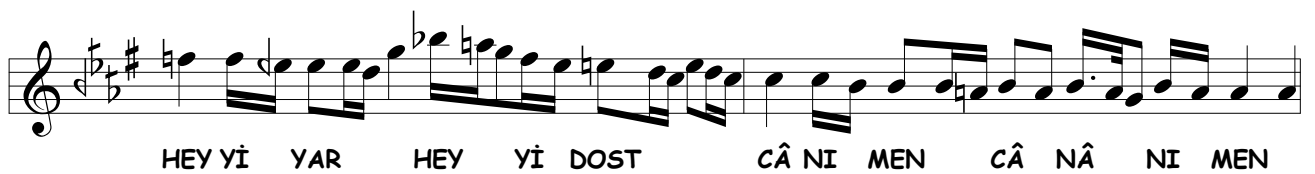
GÛF TE MEŞ EY CÂ NI CÂ NI SÂ KI YAN BEH Rİ HU DA



HEY Yİ HEY RA NÂ Yİ MEN HEY Yİ HEY Zİ BÂ Yİ MEN



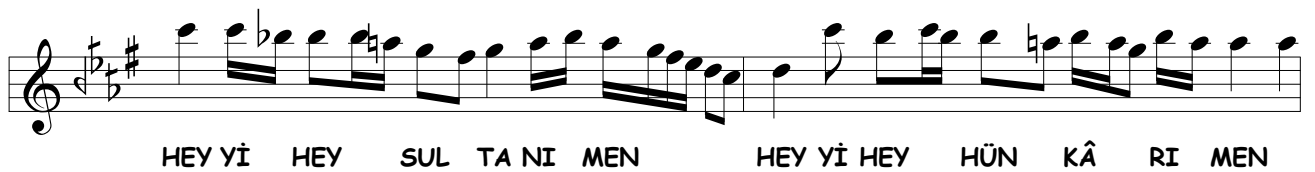
PÛR KÛ NÎ PEY MÂ NE İ VÛ NEŞ KE Nİ PEY MA NI HÎŞ



HEY Yİ YAR HEY Yİ DOST CÂ NI MEN CÂ NÂ NI MEN



EY RE SÛ Lİ HAZ RE Tİ HAK VEY HA BÎ Bİ KİB Rİ YA



HEY Yİ HEY SUL TA NI MEN HEY Yİ HEY HÜN KÂ RI MEN

EY ZI YÂ YI AYNİ Â LEM VEY İ MÂ MI EN Bİ YÂ

YEKPIYÂ LE MEYBİ DİH EY SÂ Kİ Yİ BEZ Mİ E LEST

BERME Nİ MİSKİN NAZAR KÜN EY Sİ RÂ CI PÜR Zİ YA

HER Kİ CŪ YED RŪ ZŪ ŞEB RÂ HI RI ZÂ Yİ MUS TA FA

LÂ CE REM RÂ Zİ BŪ VED EZ VEY HU DÂ Yİ MUS TA FÂ

EZ BE RÂ YI RAH ME Tİ MEC MŪ İ Â LEM Â ME DEST

HEYİHEY SUL TA NİMEN HEY Yİ HEY HŪN KÂ RI MEN

MUS TA FÂ BER Â LE MŪ Â LEM BE RÂ Yİ MUS TA FA

HEYİHEY RANÂ Yİ MEN HEY Yİ HEY Zİ BÂ Yİ MEN

İKİNCİ SELÂM

Evfer

AH SUL TA NI ME NÎ

(Saz) SUL TA NI ME NÎ

AH EN DER AH Dİ LÜ CÂN

CÂN Î MÂ NI ME NÎ

AH DER MEN Bİ DE Mİ

AH MEN ZİN DE ŞE VEM

AH YEK CÂN Çİ ŞE VED

VED SAD CÂ NI ME NÎ

28

ÜÇÜNCÜ SELÂM

Devr-i Kebîr

Â ME DÂN MAH BÛ BÎ İN SAN
 MER HA BA BE LÎ YÂ RÎ MEN (Saz)
 SAD HE ZÂ RÂN LÛT FU İH SÂN
 MER HA BA BE LÎ YÂ RÎ MEN
 Â ME DÂN MAH BÛ BÎ CÛM LE
 KÂ İ NÂT BE LÎ YÂ RÎ MEN (Saz)
 BÂ KE MA LÛ FAD LI RAH MÂN
 MER HA BA BE LÎ YÂ RÎ MEN

EY Kİ HE ZÂR Â FE RÎN YÂR YÂR
HER Kİ BU GÜN VE LE DE YÂR YÂR

BU Nİ CE SUL TÂN Ö LUR DOST (Saz) KÜ LI Ö LAN
İ NA NU BEN YÜZ SÜ RE DOST (Saz) YOK SUL İ SE

Kİ Şİ LER CÂ NİM HUS RE VÜ HA KAN Ö LUR
BAY Ö LUR CA NİM BAY İ SE SUL TAN Ö LUR

YÂ Rİ YÂR HUS RE VÜ HA KAN Ö LUR DOST
YÂ Rİ YÂR BAY İ SE SUL TAN Ö LUR DOST

EY AŞ KI TÜ BİG RİF TE SE RÂ PÂ Yİ Dİ LEM VAY (Saz)
VEY VÂS LI RU HAT GEŞ TE TE MEN NÂ Yİ Dİ LEM

VAY (Saz) GER DÂ Dİ Dİ Lİ SUH TE İ MEN NE Dİ Hİ VAY

EY VAY Dİ LEM VAY Dİ LEM VAY Dİ LEM VAY

EY GEŞ TE FE DÂ Yİ TÜ SE RÂ PÂ Yİ Dİ LEM VAY (Saz)

ŞÜD ZÜL Fİ ÇÜN HİN DÜ Yİ TÜ ME' VÂ Yİ Dİ LEM VAY

EY

KÂ Şİ Fİ ES RÂ Rİ HU DÂ MEV LÂ NA

YÂR YÂR YÂ Rİ YÂ Rİ MEN SUL

TÂ NI FE NÂ ŞÂ HI BE KA MEV LÂ NA

YÂR YÂR YÂ Rİ YÂ Rİ MEN AŞK

İT ME DE DİR HAZ RE Tİ NE BÖY LE Hİ TÂB

YÂR YÂR YÂ Rİ YÂ Rİ MEN MEV

LÂ Yİ GÜ RÜ Hİ EV Lİ YÂ MEV LÂ NA

YÂR YÂR YÂ RÎ YÂ RÎ MEN

BEN

BİL MEZ İ DİM GİZ Lİ A YÂN HEP SEN İ MİŞ SİN

YÂR YÂR YÂ RÎ YÂ RÎ MEN TEN

LER DE VÜ CAN LAR DA Nİ HÂN HEP SEN İ MİŞ SİN

YÂR YÂR YÂ RÎ YÂ RÎ MEN SEN

DEN BU Cİ HÂN İÇ RE Nİ İS TER İ DİM BEN

YÂR YÂR YÂ RÎ YÂ RÎ MEN Â

HİR BU NU BİL DİM Kİ Cİ HÂN HEP SEN İ MİŞ SİN

YÂR YÂR YÂ RÎ YÂ RÎ MEN

DÖRDÜNCÜ SELÂM

Evfer

AH SUL TÂ NI ME NÎ

(Saz) SUL TÂ NI ME NÎ

AH EN DER AH DÎ LÜ CÂN

CAN Î MÂ NI ME NÎ

AH DER MEN BÎ DE MÎ

AH MEN ZİN DE ŞE VEM

AH YEK CÂN Çİ ŞE VED

VED SAD CÂ NI ME NÎ

Konya, Aralık 1998

SON PEŞREV

Düyek

Musical score for SON PEŞREV, Düyek. The score consists of seven staves of music in 8/8 time, key of D major (two sharps). The melody is written in a single voice on a treble clef. The first staff starts with a treble clef, a key signature of two sharps, and a 6/8 time signature. The music features a mix of quarter, eighth, and sixteenth notes, with some rests and a final double bar line with repeat dots.

SON YÜRÜK

Yürük Semâî

Musical score for SON YÜRÜK, Yürük Semâî. The score consists of two staves of music in 8/8 time, key of D major (two sharps). The melody is written in a single voice on a treble clef. The first staff starts with a treble clef, a key signature of two sharps, and a 6/8 time signature. The music features a mix of quarter, eighth, and sixteenth notes, with some rests and a final double bar line with repeat dots.