

# HÜZZAM PEŞREV

DEVR-İ KEBİR

Tanbûrî Osman Bey



The first section of the Huzzam Peşrev consists of six staves of music. The key signature is one sharp (F#) and the time signature is 1/4. The music is written in a single melodic line. The first staff begins with a treble clef and a key signature of one sharp. The melody starts with a quarter note, followed by a series of eighth and sixteenth notes, and ends with a quarter note. The second staff continues the melody with a series of eighth and sixteenth notes. The third staff features a series of eighth and sixteenth notes, followed by a quarter note. The fourth staff continues the melody with a series of eighth and sixteenth notes. The fifth staff features a series of eighth and sixteenth notes, followed by a quarter note. The sixth staff concludes the section with a series of eighth and sixteenth notes, followed by a quarter note.

İkinci Hane



The second section of the Huzzam Peşrev consists of six staves of music. The key signature is one sharp (F#) and the time signature is 1/4. The music is written in a single melodic line. The first staff begins with a treble clef and a key signature of one sharp. The melody starts with a quarter note, followed by a series of eighth and sixteenth notes, and ends with a quarter note. The second staff continues the melody with a series of eighth and sixteenth notes. The third staff features a series of eighth and sixteenth notes, followed by a quarter note. The fourth staff continues the melody with a series of eighth and sixteenth notes. The fifth staff features a series of eighth and sixteenth notes, followed by a quarter note. The sixth staff concludes the section with a series of eighth and sixteenth notes, followed by a quarter note.

### Üçüncü Hane



Musical notation for the Üçüncü Hane section, consisting of six staves of music in G major. The notation includes various rhythmic values such as eighth, sixteenth, and thirty-second notes, as well as rests and bar lines. The key signature is one sharp (F#).

### Dördüncü Hane



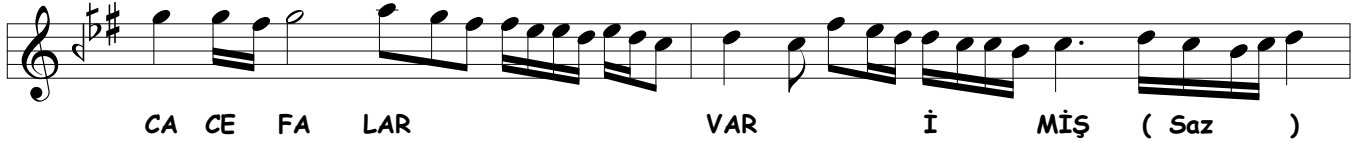
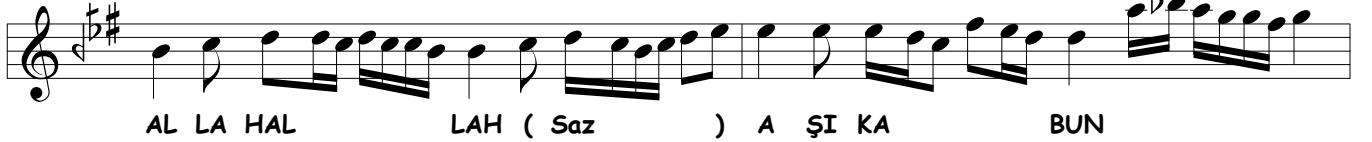
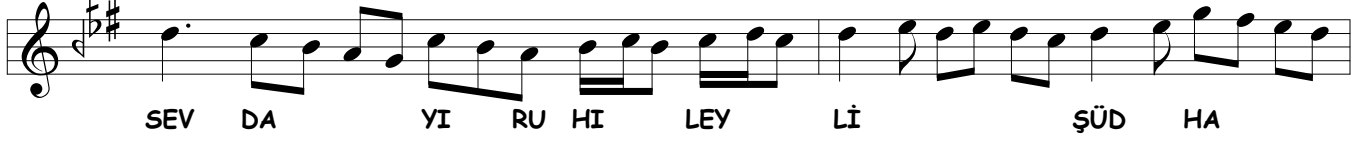
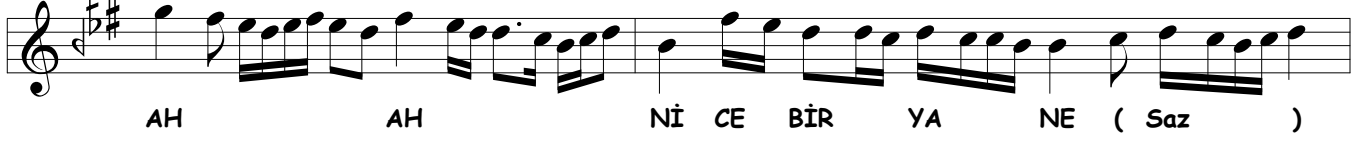
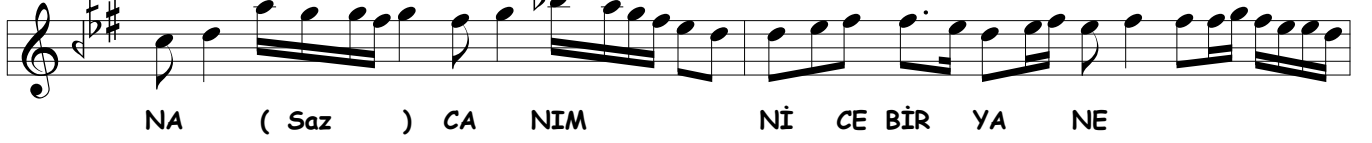
Musical notation for the Dördüncü Hane section, consisting of six staves of music in G major. The notation includes various rhythmic values such as eighth, sixteenth, and thirty-second notes, as well as rests and bar lines. The key signature is one sharp (F#).

# HÜZZAM

## MEVLEVÎ ÂYÎN-I ŞERÎF'İ

DEVİR-İ REVAN

Hammâmîzâde İsmâil Dede



YAR YÜ RE ĞİM YAR ( Saz ) GÖR Kİ NE LER VAR ( Saz )

YAR YÜ RE ĞİM DEL Cİ ĞE RİM GÖR Kİ NE LER VAR

AH AH YA RE HA BER VAR ( Saz )

TÜ MA Hİ A Cİ Bİ Kİ MİS Lİ NE DA Rİ

BE HER CİL VE CAN RA DE RA TEŞ Sİ PA Rİ ( Saz )

BE ZÜL FEY Nİ EB RU BE ÇEŞ MA Nİ A HU ( Saz )

PE Yİ DİL RÜ BA Yİ ÇÜ Şİ Rİ Şİ KÂ Rİ ( Saz )

ME HÜ HUR GU LÂ MET Zİ CAN GEŞ Tİ RA MET ( Saz )

ME HÜ HUR GU LÂ MET Zİ CAN GEŞ Tİ RA MET ( Saz )

DÜ A LEM BE DA MET Çİ Zİ BA Nİ GÂ Rİ ( Saz )

NA Zİ RET NE Dİ DEM NE EZ KES Şİ Nİ DEM ( Saz )

Dİ LÜ DİN Bİ BÜR Dİ Çİ AY YA Rİ YA Rİ ( Saz )

VE LED RA Çİ BA ŞED ŞE HA GER Zİ RAH MET ( Saz )

VE LED RA ÇI BA ŞED ŞE HA GER Zİ RAH MET ( Saz )

Zİ SİL Kİ GU LÂ MA NI HÎ ŞET ŞÜ MA Rİ ( Saz )

YAR YAR MAH BU Bİ MEN ( Saz )

DOST DOST MER GU Bİ MEN

MAT LU Bİ MEN MAK BU Lİ MEN ( Saz )

HÜ SÜN YE Kİ HA SEN YE Kİ YAR YE Kİ SÜ HAN YE Kİ (Saz)

RUH YE Kİ BE DEN YE Kİ YAR YE Kİ SÜ HAN YE Kİ

YA Rİ Dİ Lİ HA ZİN YE Kİ TA DE Mİ A TE ŞİN YE Kİ

MİL KE Tİ AŞ KU DİN YE Kİ YAR YE Kİ SÜ HAN YE Kİ

AŞ KU ME LA LE TEM YE Kİ SAK MÜ SE LA ME TEM YE Kİ

ME NÜ ME LA ME TEM YE Kİ YAR YE Kİ SÜ HAN YE Kİ

# İKİNCİ SELÂM

EVFER

AH EY HA HA Lİ KI  
KI HEFT A A SÜ MAN  
AH DER MAN DE EM  
EM FER YA Dİ RES  
AH VEY RA RA Zİ KI  
KI Pİ RÜ Cİ VAN  
VAN DER MAN MAN DE EM  
EM FER YA Dİ RES  
AH EY RA RAH Mİ TÜ  
TÜ BER Nİ Nİ KÜ BED  
AH İH SA SA Nİ TÜ  
TÜ Bİ HAD DÜ AD

AH HER LÂH LÂH ZA GÛ  
 GÛ YEM EY HU DA  
 DA DER MAN MAN DE EM  
 EM FER YA DÏ RES  
 AH EY CA CA NI MA  
 AH CA NA NA NI MA  
 AH SUL TA TA NI MA  
 AH SÛB HA NI MA

14/4

## ÜÇÜNCÜ SELÂM

### DEVİR-İ KEBİR

DEVİR-İ KEBİR

DEV LE TET PA YEN DE BA DA

EY SÜ VAR BE Lİ YA Rİ MEN

RA HİM KÜN BER A ŞI KAN MA

ZU Rİ DAR BE Lİ YA Rİ MEN

ÇÜN TA LE Bİ KER Dİ BE CİD A

MED NA ZAR BE Lİ YA Rİ MEN

CİD HA TA NE Kİ NED ÇÜ NİN A

MED HA BER HEY Yİ HEY YA RİM

HEY Yİ HEY YA RİM

HEY Yİ HEY YA RİM



EY Kİ HE ZAR A FE RİN AH BU Nİ CE SUL TAN O LUR  
HER Kİ BU GÜN VE LE DE AH İ NA NUBEN YÜZ SÜ RE

KU LI O LAN Kİ Şİ LER AH HUS RE VÜ HA  
YOK SUL İ SE BAY O LUR AH BAY İ SE SUL

KAN O LUR HUS RE VÜ HA KAN O LUR ( Saz )  
TAN O LUR BAY İ SE SUL TAN O LUR

ZE Hİ AŞK ZE Hİ AŞK Kİ MA RAST HU DA YA

Kİ MA RA VÜ Cİ HAN RA Bİ YA RAST HU DA YA

AH AH AH BE Lİ YA RİM ( Saz )

Çİ BEZ MEST Çİ SA KİST Çİ BA DEST Kİ HOR DİM

Çİ NAK LEST Çİ NUK LEST Çİ HUR MAST HU DA YA

AH AH AH BE Lİ YA RİM ( Saz )



ÇI LÛT FEST ÇI ZEV KAST ÇI BÛ YEST ÇI RÛ YEST



ÇI HAL KAST ÇI HUL KAST ÇI SÎ MAST HU DA YA



AH AH AH BE LÎ YA RÎM ( Saz )



VE LED RA ME SE LÎ GÛY DE VA NÎS BE ÇEV GÂN



BE DAN SÛ KÎ NE DER YA NE SAH RAST HU DA YA



AH AH AH BE LÎ YA RÎM ( Saz )



AN KÎ TÛ YÎ MU RA DU MAT LUB HES EY



TÎ BE RÎ CÛM LE HAL KÎ MAH BUB HES



TÎ BE RÎ CÛM LE HAL KÎ MAH BUB ( Saz ) EY



YŪ SŪ Fİ HŪS Nİ EZ Fİ RA KAT ( Saz ) EY



YŪ SŪ Fİ HŪS Nİ EZ Fİ RA KAT ( Saz ) DER



NA LE VŪ GİR YE EM ÇŪ YA KŪB DER



NA LE VŪ GİR YE EM ÇŪ YA KŪB ( Saz ) TEC



Rİ Dİ Bİ CŪ VE LED Zİ A LEM ( Saz ) TEC



Rİ Dİ Bİ CŪ VE LED Zİ A LEM ( Saz ) TA



HEM ÇŪ MŪ CER RE DAN ŞE Vİ HUB TA



HEM ÇŪ MŪ CER RE DAN ŞE Vİ HŪB ( Saz ) AH



BŪL BŪ Lİ AŞK EZ SE HER A GA Zİ KERD ( Saz )



Pİ Şİ GŪ LİS TAN SE MER A GA Zİ KERD



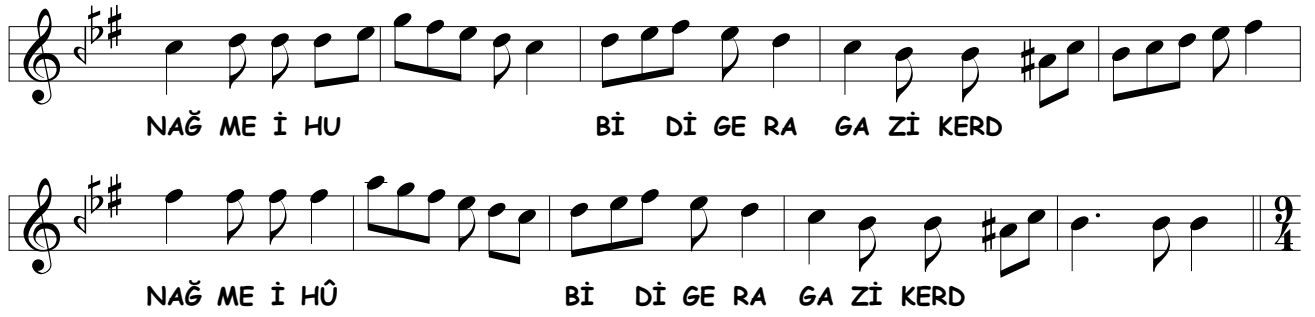
Pİ Şİ GŪ LİS TAN SE MER GA Zİ KERD



EZ PE Sİ HER PER DE VŪ NAĞ ME Kİ GŪFT



EZ PE Sİ HER PER DE VŪ NAĞ ME Kİ GŪFT



NAĞ ME İ HU Bİ Dİ GE RA GA Zİ KERD  
NAĞ ME İ HÛ Bİ Dİ GE RA GA Zİ KERD

### DÖRDÜNCÜ SELÂM

EVFER



AH SUL TA NI ME Nİ  
Nİ SUL TA NI ME Nİ  
AH EN DER Dİ LÜ CAN  
CAN İ MA NI ME Nİ  
AH DER MEN Bİ DE Mİ  
Mİ MEN ZİN DE ŞE VEM  
AH YEK CAN Çİ ŞE VED  
VED SAD CA NI ME Nİ  
AH İ MA NI ME Nİ

# SON PEŞREV

DÜYEK



The image displays a musical score for a piece titled "SON PEŞREV" in the "DÜYEK" style. The score is written on ten staves of music, each beginning with a treble clef, a key signature of one sharp (F#), and a time signature of 8/8. The notation is primarily composed of eighth and sixteenth notes, often beamed together in groups, creating a rhythmic and melodic pattern characteristic of this style. The piece concludes with a double bar line and a final chord in the key of F#.

# SON YÜRÜK

## YÜRÜK SEMAİ



The image displays a musical score for the piece "SON YÜRÜK" in the "YÜRÜK SEMAİ" style. The score is written in a single system with ten staves. The key signature is one sharp (F#), and the time signature is 2/4. The notation is in a single melodic line, starting with a treble clef and a key signature of one sharp. The first staff begins with a treble clef, a key signature of one sharp, and a 2/4 time signature. The music consists of a series of eighth and sixteenth notes, with some rests and a final double bar line at the end of the tenth staff.