

KARCIĞAR PEŞREV

DEVİR-İ KEBİR

Kanuni Ethem Efendi



The first part of the piece consists of six staves of music. The key signature is one sharp (F#) and the time signature is 2/8. The music is written in a single melodic line on a treble clef. It begins with a quarter rest followed by a quarter note, then a series of eighth and sixteenth notes, including some beamed sixteenth notes. The piece concludes with a quarter rest.

İkinci Hane



The second part of the piece, labeled 'İkinci Hane', consists of six staves of music. It continues in the same key signature (one sharp) and time signature (2/8). The notation is similar to the first part, featuring a melodic line with various rhythmic patterns, including eighth and sixteenth notes, and some beamed sixteenth notes. The piece ends with a quarter note.

Üçüncü Hane



Musical notation for the Üçüncü Hane section, consisting of six staves. The notation is in treble clef with a key signature of one sharp (F#) and a common time signature (C). The music features a variety of rhythmic patterns, including eighth and sixteenth notes, and rests. The first staff begins with a treble clef, a key signature of one sharp, and a common time signature. The second staff starts with a key signature change to one sharp and one flat (F# and Bb). The third staff returns to one sharp. The fourth staff changes to one sharp and one flat. The fifth staff returns to one sharp. The sixth staff concludes with a key signature change to one sharp and one flat. The notation includes various note values, rests, and dynamic markings such as 'p' (piano).

Dördüncü Hane



Musical notation for the Dördüncü Hane section, consisting of six staves. The notation is in treble clef with a key signature of one sharp (F#) and a common time signature (C). The music features a variety of rhythmic patterns, including eighth and sixteenth notes, and rests. The first staff begins with a treble clef, a key signature of one sharp, and a common time signature. The second staff starts with a key signature change to one sharp and one flat (F# and Bb). The third staff returns to one sharp. The fourth staff changes to one sharp and one flat. The fifth staff returns to one sharp. The sixth staff concludes with a key signature change to one sharp and one flat. The notation includes various note values, rests, and dynamic markings such as 'p' (piano).

KARCIĞAR MEVLEVÎ ÂYÎN-İ ŞERÎF'İ

DEVİR-İ REVAN

Rakım Elkutlu

İM RU Zİ ÇÜ HER RU Zİ HA RA BÎ Mİ HA RAB
HEY Yİ YAR HEY Yİ DOST MEG ŞA DE Rİ EN Dİ ŞE
VÜ BER GÎ Rİ RE BAB CA NI MEN CA NA NI MEN MEV
LA YI MEV LÂ NA YI MEN SAD GÛ NE NE MA ZES
TÜ RÜ KÛ AS TÜ SÛ CÛD HEY Yİ YAR HEY Yİ DOST
AN RA Kİ CE MA Lİ DOST BA ŞED MİH RAB
CA NI MEN CA NA NI MEN MEV LÂ YI MEV LÂ NA YI MEN
PÎ Rİ MEN İH SA NI MEN CA NI MEN CA NÂ NI MEN
DER Dİ MEN DER MA NI MEN MEV LÂ YI MEV LÂ NÂ YI MEN
MA MES TÜ HA RAB EZ PE Yİ MA ŞUK E LES
TİM HEY YAR HEY Yİ DOST MA MES



TÜ E LES TİM ÇÜ MA ŞUK PE RES TİM



CA NI MEN CA NA NI MEN MEV LÂ YI MEV LÂ NA YI MEN



MES TA NI HA RA BİM Bİ GÛ Pİ



Rİ HA RA BAT HEY Yİ HEY HEY Yİ DOST



TA BA DE Bİ YA REND Kİ MA A ŞI KI MES TİM



CA NI MEN CA NA NI MEN MEV LÂ YI MEV LÂ NÂ YI MEN



YAR YÜ RE ĞİM YAR DEL Cİ ĞE RİM VAY



YAR YÜ RE ĞİM DEL Cİ ĞE RİM GÖR Kİ NE LER VAR



YA RE HA BER VAR



İKİNCİ SELÂM

EVFER

SÎ MİN ZE KA NA
(S a z) SEN Gİ Gİ Dİ LÂ
LÂ LE İ ZA RA
(Saz) HOŞ KÜN KÜN BE Nİ GÂ
GÂ Hİ Dİ Dİ Lİ GAM
PER VE Rİ MA RA AH İN KA
KA Lİ Bİ FER FER SU DE
DE GER EZ KÛ Yİ TÛ DU REST
AH EL KAL KAL BÛ A LÂ
LÂ BA Bİ Bİ KE LEY
LEN VE NE HA RA



ÜÇÜNCÜ SELÂM

DEVİR-İ KEBİR



AH AN FE Rİ DU Nİ Cİ HA NI



MA NE Vİ BE Lİ YA RİM



BES BÜ VED BÜR HA NI KAD REŞ



MES NE Vİ BE Lİ YA RİM



MEN Çİ GÛ YEM VAS FI AN A



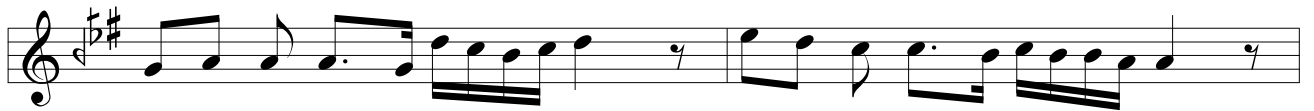
Lİ CE NAB BE Lİ YA RİM



NİS Tİ PEY GAM BER VE Lİ DA



RED Kİ TAB HEY Yİ HEY YA RİM





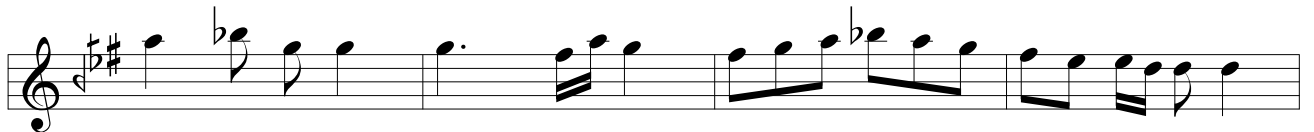
EY Kİ HE ZAR A FE RİN BU Nİ CE SUL
HER Kİ BU GÜN VE LE DE İ NA NU BEN



TAN O LUR KU LI O LAN Kİ Şİ LER CA NIM
YÜZ SÜ RE YOK SUL İ SE BAY O LUR CA NIM



HUS RE VÜ HA KAN O LUR A MAN HUS RE VÜ HA KAN O LUR
BAY İ SE SUL TAN O LUR A MAN VA SI LI CA NAN O LUR



KÂ Şİ Fİ ES RA RI HÜ DA MEV LÂ NÂ SUL



TA NI FE NA ŞA HI BE KA MEV LÂ NÂ AŞK



İT ME DE DİR HAZ RE Tİ NE BÖY LE Hİ TAB MEV

LÂ YI GÜ RÛ Hİ EV Lİ YA MEV LÂ NA

MAK SA DI Â ŞI KÎN O LAN MEV LÂ NA VEY

NEŞ E İ MÛ' Mİ NÎN O LAN MEV LÂ NA BÎ

ÇA RE LE RİZ HA Lİ Mİ ZE RAH MEY LE BÎ

ÇA RE LE RE MU İN O LAN MEV LÂ NA AŞ

KAST BER A SÛ MAN PE RÎ DEN SAD

PER DE BE HER NE FES DE RÎ DEN GÜF

TEM Kİ Dİ LÂ MÛ BA RE KET BAD DER

HAL KA İ A ŞI KAN RE SÎ DEN

DÖRDÜNCÜ SELÂM

EVFER

SUL TA NI ME NÎ

AH SUL TA NI ME NÎ

(S a z) EN DER Dİ LÜ CA

CAN İ MA NI ME NÎ

AH DER MEN Bİ DE Mİ

Mİ MEN ZİN DE ŞE VEM

(S a z) YEK CAN Çİ ŞE VED

VED SAD CA NI ME NÎ

AH İ MA NI ME NÎ

SON PEŞREV

DÜYEK

Musical score for SON PEŞREV, DÜYEK. The score consists of ten staves of music in 8/8 time, key of D major. The melody is written in a single voice on a treble clef staff. The music features a mix of eighth and sixteenth notes, with some rests and a final double bar line with repeat dots.

SON YÜRÜK

YÜRÜK SEMAİ

Musical score for SON YÜRÜK, YÜRÜK SEMAİ. The score consists of two staves of music in 8/8 time, key of D major. The melody is written in a single voice on a treble clef staff. The music features a mix of eighth and sixteenth notes, with some rests and a final double bar line with repeat dots.