

# NEVA PEŞREV

DEVİR-İ KEBİR

Zeki Mehmet Ağa



İkinci Hane



### Üçüncü Hane



Musical notation for the Üçüncü Hane section, consisting of six staves. The notation is in treble clef with a key signature of one sharp (F#) and a 2/4 time signature. The music features a variety of rhythmic patterns, including eighth and sixteenth notes, and rests. The first staff begins with a quarter note G4, followed by eighth notes A4, B4, and C5. The second staff contains a series of eighth notes and sixteenth notes, with a quarter rest. The third staff starts with a quarter note D5, followed by eighth notes E5, F#5, and G5. The fourth staff begins with a quarter note G5, followed by eighth notes F#5, E5, and D5. The fifth staff starts with a quarter note C5, followed by eighth notes B4, A4, and G4. The sixth staff begins with a quarter note F#4, followed by eighth notes E4, D4, and C4. The section concludes with a quarter rest.

### Dördüncü Hane



Musical notation for the Dördüncü Hane section, consisting of six staves. The notation is in treble clef with a key signature of one sharp (F#) and a 2/4 time signature. The music features a variety of rhythmic patterns, including eighth and sixteenth notes, and rests. The first staff begins with a quarter note G4, followed by eighth notes A4, B4, and C5. The second staff contains a series of eighth notes and sixteenth notes, with a quarter rest. The third staff starts with a quarter note D5, followed by eighth notes E5, F#5, and G5. The fourth staff begins with a quarter note G5, followed by eighth notes F#5, E5, and D5. The fifth staff starts with a quarter note C5, followed by eighth notes B4, A4, and G4. The sixth staff begins with a quarter note F#4, followed by eighth notes E4, D4, and C4. The section concludes with a quarter rest.

# NEVÂ MEVLEVÎ ÂYÎN-İ ŞERÎF'İ

DEVR-İ REVAN

Hamamîzâde İsmâil Dede

EY TE CEL Lİ GÂ HI CA NEM RU Yİ TÛ

HEY Yİ HEY HEY YAR YA Rİ YA Rİ MEN

VEY Dİ LEM RA MEY Lİ KÛL Lİ SU Yİ TÛ

HEY Yİ HEY HEY YAR YA Rİ YA Rİ MEN

SAD HE ZA RAN CA NÛ DİL A VİH TE

HEY Yİ HEY HEY YAR YA Rİ YA Rİ MEN

Dİ DEM EV DİL BER Zİ YEK TA MU Yİ TÛ

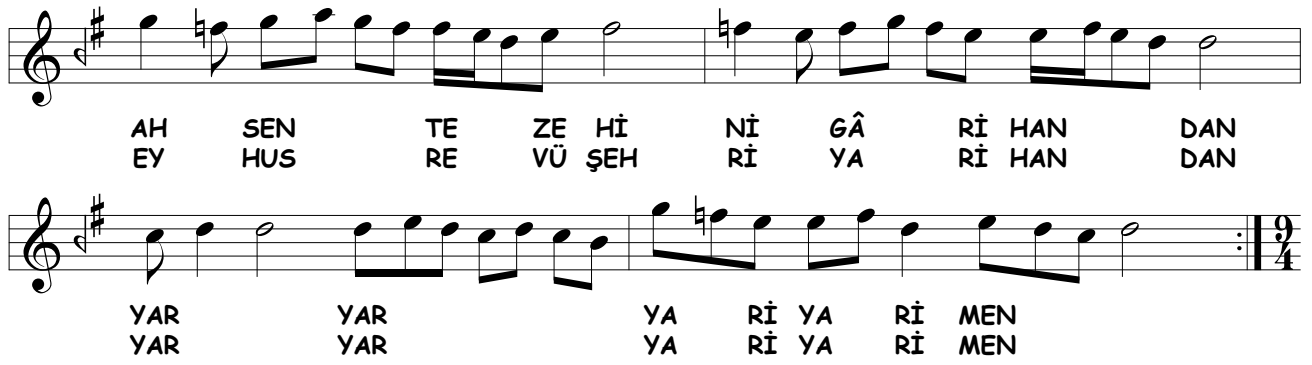
HEY Yİ HEY HEY YAR YA Rİ YA Rİ MEN (Saz)

HUR Şİ Dİ Sİ PİH Rİ LÂ ME KÂ

Nİ Dİ Lİ MAST HEY Yİ HEY HEY YAR

YA Rİ YA Rİ MEN KEY HUS RE Vİ MİL

Kİ Dİ LÜ CA NI Dİ Lİ MAST  
HEY HEY HEY YAR YA Rİ YA Rİ MEN AH  
TA DER Dİ Lİ MA AŞ KI TÜ MEN  
ZİL KER DEST HEY Yİ HEY HEY YAR  
YA Rİ YA Rİ MEN SER ÇEŞ ME İ A  
Bİ ZİN DE GÂ Nİ Dİ Lİ MAST  
HEY Yİ HEY HEY YAR YA Rİ YA Rİ MEN ( Saz)  
A FE RİN EY MA Hİ RU BER  
TÜ Tİ Yİ CA NEM Bİ ŞÜD HAY  
CA NI TÜ AH BER CE MA Lİ  
RA NÜ ZAR AH ZAN ŞE KER HAN  
Bİ HA DÜ PA YA Nİ TÜ  
DÜ LE Bİ HAN DA Nİ TÜ  
BER CE MA Lİ Bİ HA DÜ PA YA Nİ TÜ ( Saz)  
ZAN ŞE KER HAN Dİ LE Bİ HAN DA Nİ TÜ  
EY RÛ Yİ TÜ NEV BE HA HA Rİ HAN DAN  
EY ŞEH Rİ Cİ HAN HA RA Bİ Bİ TÛ



AH SEN TE ZE Hİ Nİ GÂ Rİ HAN DAN  
EY HUS RE VÜ ŞEH Rİ YA Rİ HAN DAN

YAR YAR YAR YA Rİ YA Rİ MEN  
YAR YAR YA Rİ YA Rİ MEN

## İKİNCİ SELÂM

EVFER



EY ŞA ŞA HI ŞEH  
ŞEH Rİ AK AK LÜ CAN  
CAN BER TAH TAH TI DİL  
DİL HA KAN TÜ Yİ  
( Saz ) EN DER DER ZE Mİ  
Mİ NÜ A A SÜ MAN  
MAN SUL TA TA NI SUL  
SUL TA NAN NAN TÜ Yİ  
AH DER CA CA NI MA

MA CA NAN NAN TÛ Yİ  
 AH DER KÂ KÂ Nİ MA  
 MA NÎ KAN TÛ Yİ  
 AH CEN NET TÛ Yİ  
 Yİ ŞER BET TÛ Yİ  
 AH SA KÎ TÛ Yİ  
 Yİ RID VAN TÛ Yİ  
 AH BA A A ŞİK EZ  
 EZ DÛN YA YA ME GÛ  
 GÛ VEZ MİL MİL KE Tİ  
 AH UK BA BA ME GÛ  
 AH CÛZ HAZ HAZ RE Tİ  
 Tİ MEV LA LA ME GÛ

AH MI GÜ GÜ KI İ İ  
İ NÜ AN TÜ Yİ

### ÜÇÜNCÜ SELÂM

#### DEVİR-İ KEBİR

A Şİ KAN DER KÜ Yİ CA NAN  
ES SA LÂ BE Lİ YA Rİ MEN  
SU Yİ AN HUR Şİ Dİ TA BAN

ES SA LÂ BE Lİ YA Rİ MEN DOST

ŞEM Sİ TEB Rİ Zİ Zİ BA LÂ

Yİ FE LEK BE Lİ YA Rİ MEN

HER ZE MA Nİ Mİ KE ŞED HAN

ES SA LÂ HEY Yİ HEY YA RİM

EY Kİ HE ZAR A FE RİN AH BU Nİ CE SUL TAN O LUR  
HER Kİ BU GÜN VE LE DE AH İ NA NU BEN YÜZ SÜ RE

AH KU LI O LAN Kİ Şİ LER CA NİM HUS RE VÜ HA  
AH YOK SUL İ SE BAY O LUR CA NİM BAY İ SE SUL

KAN O LUR AH HUS RE VÜ HA KAN O LUR AH  
TAN O LUR AH BAY İ SE SUL TAN O LUR



2.

DER

BA ĞI CE MA LI SA NE MA ÇÜN GÜ Lİ RA NA DER

ÇEŞ Mİ ÇÜ NU Rİ VÜ ÇÜ CAN DER HE ME A ZA MEN

BÜL BÜ Lİ GÜL ZA RE MÜ DER DA Mİ TÜ ZA REM MEN

BÜL BÜ Lİ GÜL ZA RE MÜ DER DA Mİ TÜ ZA REM EZ

ÇİS Tİ A CEB BA TÜ ME RA İN HE ME SEV DA

YAR YAR İN HE ME SEV DA

DOST DOST İN HE ME SEV DA EY

RU Yİ TÜ KIB LE İ Cİ HA NU Dİ Lİ MEN VAN

DER DÜ Cİ HAN EM NÜ E MA NI Dİ Lİ MEN VAN

DER DÜ Cİ HAN EM NÜ E MA NI Dİ Lİ MEN HEM



CA NÜ TE Nİ VÜ HEM TÜ CA NI Dİ Lİ MEN EY



GEV HE Rİ DER YA YI Nİ HA NI Dİ Lİ MEN EY



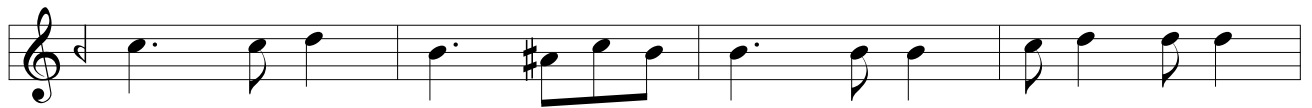
GEV HE Rİ DER YA YI Nİ HA NI Dİ Lİ MEN



AH TÜ MA Hİ A Cİ Bİ Kİ MİS Lİ NE DA Rİ



BE HER CİL VE CAN RA DER A TEŞ Sİ PA Rİ



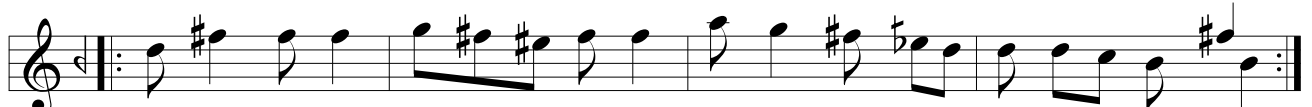
YAR YAR YAR AH



BE ZÜL FEY Nİ EB RU BE ÇEŞ MA Nİ A HU  
PE Yİ DİL RÜ BA YI ÇÜ Şİ Rİ Şİ KÂ Rİ



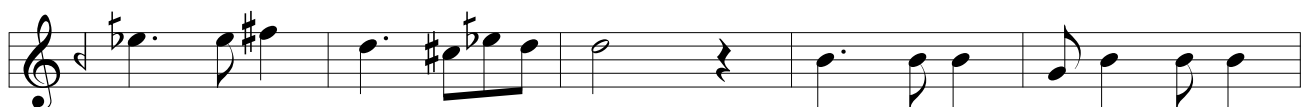
YAR YAR YAR AH



ME HÜ HUR GU LÂ MET Zİ CAN GEŞ Tİ RA MET



DÜ A LEM BE DA MET Çİ Zİ BA Nİ GÂ Rİ



YAR YAR YAR AH NA Zİ RET



NE Dİ DEM NE EZ KES Şİ Nİ DEM Dİ LÜ DİN Bİ BÜR Dİ



Çİ AY YA Rİ YA Rİ YAR YAR YAR AH

VE LED RA ÇI BA ŞED ŞE HA GER Zİ RAH MET Zİ SİL Kİ  
GU LÂ MA NI Hİ ŞET ŞÜ MA Rİ YAR YAR

### DÖRDÜNCÜ SELÂM

EVFER

YAR SUL TA NI ME Nİ  
Nİ SUL TA NI ME Nİ  
AH EN DER Dİ LÜ CAN  
CAN İ MA NI ME Nİ  
AH DER MEN Bİ DE Mİ  
Mİ MEN ZİN DE ŞE VEM  
AH YEK CAN Çİ ŞE VED  
VED SAD CA NI ME Nİ  
AH İ MA NI ME Nİ

# SON PEŞREV

DÜYEK



The image displays a musical score for a piece titled "SON PEŞREV" in the "DÜYEK" style. The score is written on ten staves of music, each beginning with a treble clef, a key signature of one sharp (F#), and a time signature of 8/8. The notation is a single melodic line, characteristic of the düyek style, which is a form of Turkish folk music. The melody is composed of eighth and sixteenth notes, often with grace notes and slurs. The piece concludes with a double bar line and a final cadence in the key of F#.

# SON YÜRÜK

## YÜRÜK SEMAİ



The image displays a musical score for the piece "SON YÜRÜK" in the "YÜRÜK SEMAİ" style. The score is written in a single system with ten staves. The key signature is one sharp (F#), and the time signature is 2/4. The notation is in a treble clef. The first staff begins with a treble clef, a key signature of one sharp, and a 2/4 time signature. The music consists of a series of eighth and sixteenth notes, with some rests and a final double bar line. The subsequent staves continue the melodic line, showing various rhythmic patterns and intervals. The notation is clear and legible, with a consistent layout throughout the piece.