

# SABÂ PEŞREV

DEVİR-İ KEBİR

Tanbûrî Osman Bey

The first section of the Sabâ Peşrev, titled "DEVİR-İ KEBİR" by Tanbûrî Osman Bey, is written in 2/8 time. It consists of seven staves of music. The notation is in treble clef with a key signature of one flat (B-flat). The first staff begins with a 28-measure rest. The music features a mix of eighth and sixteenth notes, with some measures containing beamed sixteenth notes. The piece concludes with a final cadence on a whole note.

İkinci Hane

The second section of the Sabâ Peşrev, titled "İkinci Hane", is written in 2/8 time. It consists of seven staves of music. The notation is in treble clef with a key signature of one flat (B-flat). The music continues with eighth and sixteenth notes, maintaining the melodic and rhythmic style of the first section. It ends with a final cadence on a whole note.

Üçüncü Hane



Musical notation for Üçüncü Hane, consisting of six staves. The notation is in treble clef with a key signature of one flat (B-flat) and a time signature of 2/4. The first staff begins with a quarter rest followed by a quarter note G4, then a half note G4. The second staff continues with a quarter note G4, a quarter note A4, and a quarter note B4. The third staff features a quarter note B4, a quarter note C5, and a quarter note D5. The fourth staff has a quarter note E5, a quarter note F5, and a quarter note G5. The fifth staff shows a quarter note A5, a quarter note B5, and a quarter note C6. The sixth staff concludes with a quarter note D6, a quarter note E6, and a quarter note F6.

Dördüncü Hane



Musical notation for Dördüncü Hane, consisting of six staves. The notation is in treble clef with a key signature of one flat (B-flat) and a time signature of 2/4. The first staff begins with a quarter rest followed by a quarter note G4, then a half note G4. The second staff continues with a quarter note G4, a quarter note A4, and a quarter note B4. The third staff features a quarter note B4, a quarter note C5, and a quarter note D5. The fourth staff has a quarter note E5, a quarter note F5, and a quarter note G5. The fifth staff shows a quarter note A5, a quarter note B5, and a quarter note C6. The sixth staff concludes with a quarter note D6, a quarter note E6, and a quarter note F6.

# SABÂ MEVLEVÎ ÂYÎN-I ŞERÎF'Î

DEVİR-İ REVAN

Hamamîzâde  
İsmâil Dede



BİŞ NE Vİ DEZ NA LE İ BAN Gİ RE BAB HEY



YA Rİ YAR NÜK TE HA Yİ AŞ KI DER HER GÛ NE BAB



HEY Yİ HEY HEY YAR Pİ Rİ MEN AH



BA FE GA NÜ NEV HA GÛ YAN DA İ MA HEY



YA Rİ YAR EY HU DA VÛ EY HU DA VÛ EY HU DA



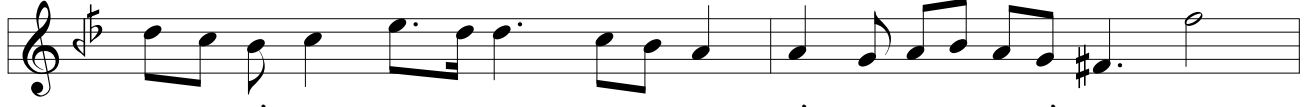
HEY Yİ HEY HEY YAR Pİ Rİ MEN AH



TAH TI FEV KEZ AŞ KI A MED DER VÛ CÛD HEY



YA Rİ YAR HEM ZE Mİ Nİ Tİ RE HEM ÇER HI KE BÛD



HEY Yİ HEY HEY YAR Pİ Rİ MEN AH



EZ ME HAB BET ZA Tİ HES Tİ DER Cİ HAN HEY



YA Rİ YAR BEH Rİ HİK MET TA ŞE VED HA LİK A YAN



HEY Yİ HEY HEY YAR Pİ Rİ MEN AH

MAH BU Bİ MEN MER GU Bİ MEN  
MAT LU Bİ MEN MAH BU Bİ MEN  
MER GU Bİ MEN MAT LU Bİ MEN  
HEY Yİ HEY HEY YAR Pİ Rİ MEN AH  
DER TA Rİ KAT EV VEL AN BA ŞED Kİ DİL HEY  
YA Rİ AH DER DE RU Nİ TEN ŞE VED SA Fİ Zİ GİL  
HEY HEY HEY YAR Pİ Rİ MEN AH  
AŞ Kİ MER DAN BER TE REZ AŞ  
Kİ HU DAST Pİ Rİ MEN  
ZAN Kİ DER MER DAN HU DA RA  
SIR RI HAST Pİ Rİ MEN ( Saz )  
HES Tİ HAK MA' BU Dİ CÜM LE CÜM LE  
DER Cİ HAN AH Pİ Rİ MEN

NİS Tİ KES EZ BEN DE Gİ İ  
O Cİ HAN Pİ Rİ MEN ( Saz )  
HEY Yİ YAR YA Rİ YA Rİ MEN HEY Yİ HEY  
YA Rİ YA Rİ MEN AH Pİ RİM  
AH DES Tİ Gİ RİM YA Rİ YA Rİ MEN  
YAR YAR YÜ RE ĞİM DEL DEL Cİ ĞE RİM  
YAR YAR GÖR Kİ NE LER VAR ( Saz )  
AH MAH BU Bİ MEN VAY AH  
AH HEY Yİ HEY MAK BU Lİ MEN VAY

## İKİNCİ SELÂM

EVFER

SUL TA Nİ ME Nİ  
Nİ SUL TA Nİ ME Nİ

( S a z ) EN DER DÎ LÛ CA  
 CAN Î MA NI ME NÎ  
 AH DER MEN BÎ DE MÎ  
 MÎ MEN ZÎN DE ŞE VEM  
 ( S a z ) YEK CAN ÇÎ ŞE VE  
 VED SAD CA NI ME NÎ  
 AH Î MA NI ME NÎ

14  
 4

# ÜÇÜNCÜ SELÂM

-5-

## DEVİR-İ KEBİR

HEM ÇÜ A DEM HER VE Lİ NÜ  
 Rİ HU DAST BE Lİ YA Rİ MEN  
 TA NE PİN DA Rİ Kİ HAK EZ  
 VEY CÜ DAST BE Lİ YA Rİ MEN  
 ZAN ME LÂ İK SEC DE A REN  
 DEŞ Zİ CAN BE Lİ YA Rİ MEN  
 KAN DE RU Dİ DEN Dİ NU Rİ  
 Bİ KE RAN BE Lİ YA Rİ MEN  
 HAK HA Lİ FEŞ KER Dİ DER AR  
 ZU SE MA BE Lİ YA Rİ MEN  
 TA Kİ GER DED SÛ Yİ MEN ZİL  
 REH NÜ MA HEY Yİ HEY YA RİM

EY Kİ HE ZAR A FE RİN  
HER Kİ BU GÜN VELE DE

BUNİ CE SUL TAN O LUR  
İ NA NU BEN YÜZ SÜ RE

AH KU LI O LAN Kİ Şİ LER AH AH  
AH YOK SUL İ SE BAY O LUR AH AH

HUS RE VÜ HA KAN O LUR AH HUS RE VÜ HA KAN O LUR  
BAY İ SE SUL TAN O LUR AH BAY İ SE SUL TAN O LUR

BEN

BİL MEZ İ DİM GİZ Lİ A YAN HEY HEY HEP SEN İ MİŞ

SİN TEN LER DE VÜ CAN LAR DA Nİ HAN AH AH

HEP SEN İ MİŞ SİN YAR YAR HEP SEN İ MİŞ

SİN SEN DEN BU Cİ HAN İÇ RE Nİ ŞAN AH AH





İS TER İ DİM BEN SEN DEN BU Cİ HAN İÇ RE Nİ ŞAN HEY



HEY İS TER İ DİM BEN A HİR BU NU BİL DİM Kİ Cİ HAN



AH AH HEP SEN İ MİŞ SİN YAR



YAR HEP SEN İ MİŞ SİN OL DUK Yİ NE BİZ SEC DE BE Rİ



AH AH NARİ MU HAB BET OL MAZ Dİ Lİ MİZ



BES TE İ YAR YAR EF KA Rİ MU HAB BET CA



NÜ Dİ Lİ Mİ EY LER İ DİM YAR YAR GAM ZE NE TES



LİM CA NÜ Dİ Lİ Mİ EY LER İ DİM YAR YAR



GAM ZE NE TES LİM MAH RU Mİ GAM OL SA Dİ Lİ YAR



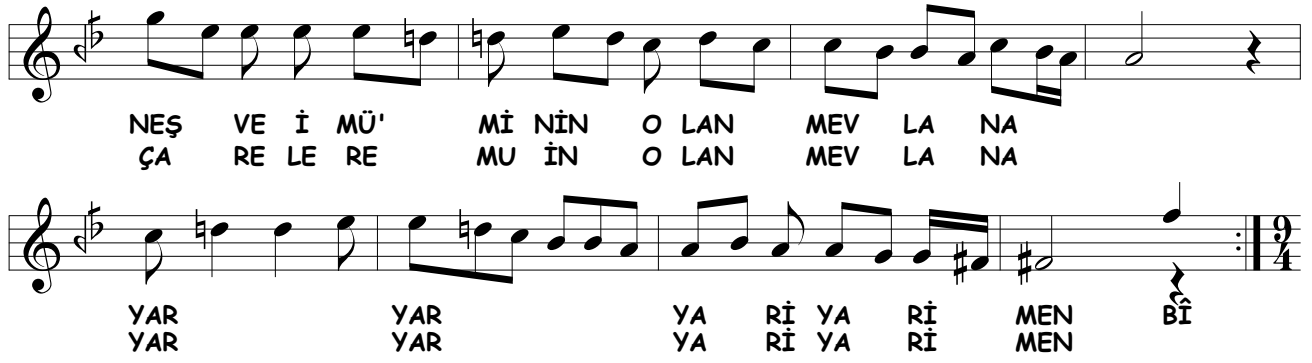
YAR ZA Rİ MU HAB BET AH AH EY



MAK SA DI A Şİ KİN O LAN MEV LA NA  
ÇA RE LE RİZ HA Lİ Mİ ZE RAH MEY LE



YAR YAR YAR YAR YA Rİ YA Rİ MEN VEY  
YAR YAR YAR YAR YA Rİ YA Rİ MEN Bİ



NEŞ VE İ MÜ' Mİ NİN O LAN MEV LA NA  
ÇA RE LE RE MU İN O LAN MEV LA NA

YAR YAR YAR YAR YA Rİ YA Rİ MEN Bİ  
YAR YAR YA Rİ YA Rİ MEN MEN

### DÖRDÜNCÜ SELÂM

EVFER

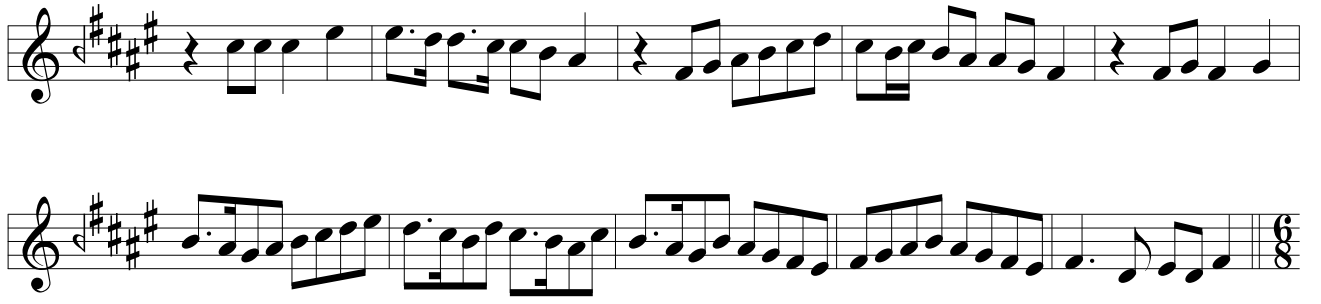


SUL TA NI ME Nİ  
Nİ SUL TA NI ME Nİ  
( S a z ) EN DER Dİ LÜ CAN  
CAN İ MA NI ME Nİ  
AH DER MEN Bİ DE Mİ  
Mİ MEN ZİN DE ŞE VEM  
( S a z ) YEK CAN Çİ ŞE VED  
VED SAD CA NI ME Nİ  
AH İ MA NI ME Nİ

# SON PEŞREV

DÜYEK

The image displays a musical score for a piece titled "SON PEŞREV" in the "DÜYEK" style. The score is written in G major, indicated by four sharps (F#, C#, G#, D#) in the key signature. The time signature is 2/4. The music is presented on ten staves, each beginning with a treble clef and a common time signature. The notation includes various rhythmic values such as eighth, sixteenth, and thirty-second notes, as well as rests and accidentals. The piece concludes with a double bar line on the final staff.



## SON YÜRÜK

### YÜRÜK SEMAİ

