

ŞEDARABAN PEŞREV

DEVİR-İ KEBİR

Gazi Giray Han



Musical score for Devir-i Kebir, consisting of six staves of music. The key signature is three flats (B-flat, E-flat, A-flat) and the time signature is 2/8. The music is written in a single melodic line on a treble clef staff. The first staff begins with a 28-measure rest. The melody is characterized by a series of eighth and sixteenth notes, with some rests and accidentals (sharps and flats) throughout.

Mülâzime



Musical score for Mülâzime, consisting of seven staves of music. The key signature is three flats (B-flat, E-flat, A-flat) and the time signature is 2/8. The music is written in a single melodic line on a treble clef staff. The melody continues from the previous section, featuring a mix of eighth and sixteenth notes, with some rests and accidentals.

İkinci Hane



Musical notation for the 'İkinci Hane' section, consisting of six staves of music in a 5/8 time signature with a key signature of two sharps (F# and C#). The notation includes various rhythmic patterns, including eighth and sixteenth notes, and rests.

Mülâzime



Musical notation for the 'Mülâzime' section, consisting of six staves of music in a 5/8 time signature with a key signature of two sharps (F# and C#). The notation includes various rhythmic patterns, including eighth and sixteenth notes, and rests.

ŞEDARABAN ÂYİN-İ ŞERÎF'İ

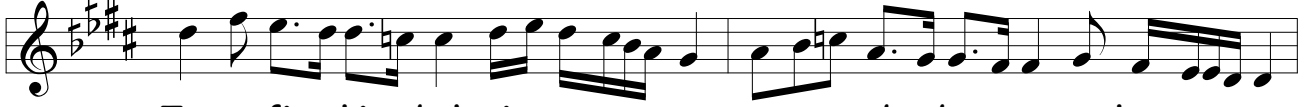
BİRİNCİ SELÂM

DEVİR-İ REVAN

Neyzen Salih Dede



Ey fer dü hay yü dâ nâ ya rab be na za lem na
Ma a ci zi fa ki rîm ser keş te vü ha ki rîm



Tev fi ki bah şî ma ra ya rab be na za lem na
Der ben di ten e si rîm ya rab be na za lem na



hey yi hey sul ta nı men hey yi hey hün kâ rı men



An sur hi ka ba yi ki çü meh pa re be ra med
Şem sül hak kı teb ri zi re si des ti bi gû yed



hey yi hey sul ta nı men İm sal der in hır
hey yi hey sul ta nı men Ger çer hi sa fa



ka i je ni gâr ah ber a med
an me hi en var ah ber a med



Baz a me dem der kû şî şî



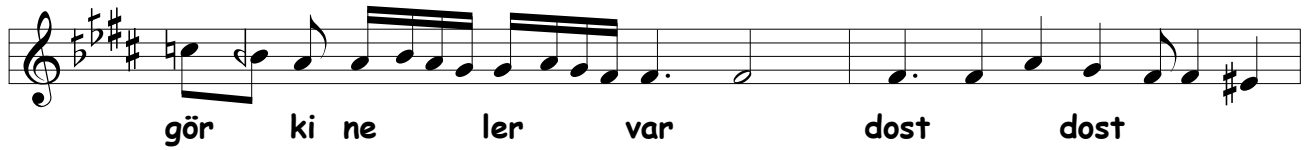
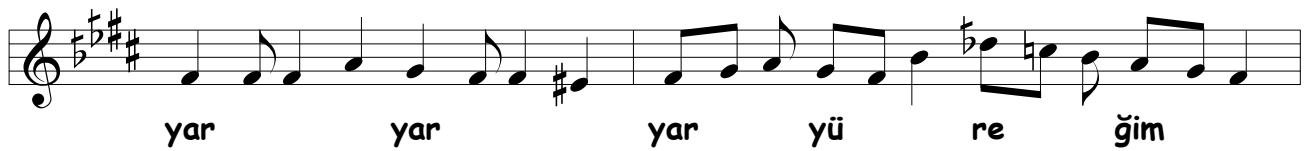
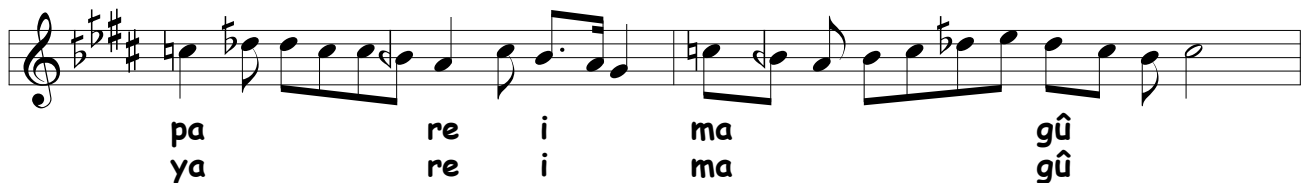
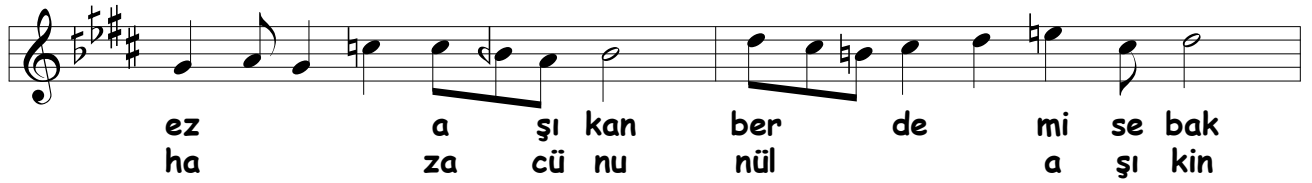
ha za cü nu nül a şî kin



hey yar hey dost pi ri men vay



Ta ser ni han der de mi ta bak
Be re vi şî kâ tib ber va rak

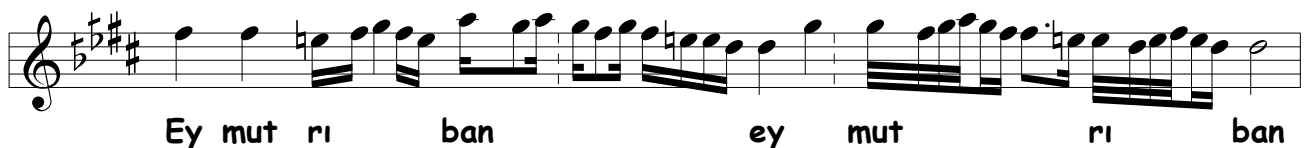


İKİNCİ SELÂM

var Ey re su li haz re ti hak
vey ha bi bi kib ri ya
Ey zi ya i ay nı a
lem Vey i ma mı
en bi ya mer ha met kün ha
ki pa yet ru yi mon
la ru zi şeb ah me dü mah
mud e bül ka sım
mu ham med mus ta fa

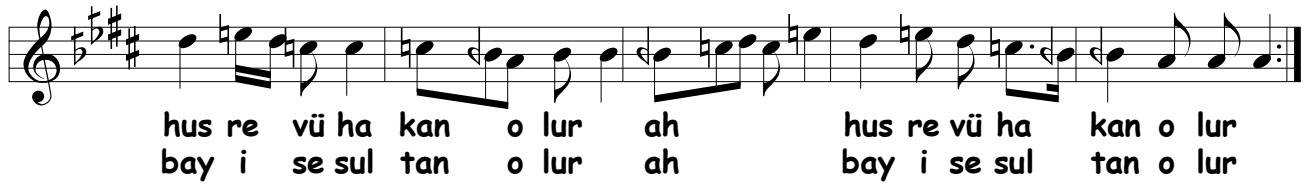
ÜÇÜNCÜ SELÂM

DEVİR-İ KEBİR





tan o lur Ku lı o lan ki ŧi ler ah
yüz sũ re Yok sul i se bay o lur ah



hus re vũ ha kan o lur ah hus re vũ ha kan o lur
bay i se sul tan o lur ah bay i se sul tan o lur



Der



kũ yi ha ra bat ah me ra aŧk ke ŧan kerd An



dil be ri ay yar ah me ra di dũ ni ŧan kerd Men



der pe yi an dil be ri ay yar yar bi ref tem O



ru yi hod an an lâh za zi men baz ni han kerd Sul



ta nı a ref na ki bũ deŧ mah mah re mi es rar An



sır rı te cel li i e zel cũm le be yan kerd



DÖRDÜNCÜ SELÂM

var Sul ta nı me ni
sul ta nı me ni En der
di lü can i ma
nı me ni ah Der men
bi de mi men zin de şe
vem Yek can çi şe ved
sad ca nı me ni

SON PEŞREV

DÜYEK

The image displays a musical score for a piece titled "SON PEŞREV" in the "DÜYEK" style. The score is written in G major (one sharp) and 2/4 time. It consists of 11 staves of music. The notation includes various rhythmic values such as eighth and sixteenth notes, often beamed together, and rests. The piece concludes with a double bar line and a final cadence symbol (a stylized 'C' with a vertical line through it) on the eleventh staff.

SON YÜRÜK

YÜRÜK SEMÂÎ

