

# ŞEDARABAN PEŞREV

DEVİR-İ KEBİR

Gazi Giray Han

Musical score for the Şedaraban Peşrev, Devir-i Kebir section. The score is written in treble clef, 2/8 time, and the key signature is three flats (B-flat, E-flat, A-flat). The piece consists of six staves of music. The first staff begins with a treble clef, a key signature of three flats, and a 2/8 time signature. The music is a continuous melodic line with various rhythmic patterns, including eighth and sixteenth notes, and rests. The piece concludes with a double bar line.

Mülâzime

Musical score for the Şedaraban Peşrev, Mülâzime section. The score is written in treble clef, 2/8 time, and the key signature is three flats (B-flat, E-flat, A-flat). The piece consists of six staves of music. The first staff begins with a treble clef, a key signature of three flats, and a 2/8 time signature. The music is a continuous melodic line with various rhythmic patterns, including eighth and sixteenth notes, and rests. The piece concludes with a double bar line.

İkinci Hane



Musical notation for the 'İkinci Hane' section, consisting of six staves of music in a 5/8 time signature with a key signature of two sharps (F# and C#). The notation includes various rhythmic patterns, including eighth and sixteenth notes, and rests.

Mülâzime



Musical notation for the 'Mülâzime' section, consisting of six staves of music in a 5/8 time signature with a key signature of two sharps (F# and C#). The notation includes various rhythmic patterns, including eighth and sixteenth notes, and rests.

# ŞEDARABAN MEVLEVÎ ÂYIN-İ ŞERÎF'İ

DEVİR-İ REVAN

Mustafa Nakşî Dede



EY RE SU Lİ HAZ RE Tİ HAK VEY HA Bİ Bİ KİB Rİ YA  
EY Zİ YA Yİ AY Nİ A LEM VEY İ MA MI EN Bİ YA

YAR YAR DOST DOST

YA Rİ HEY SUL TA Nİ MEN YEK Pİ YA LE MEY Bİ DİH EY

SA Kİ İ BEZ Mİ E LEST YAR YAR

DOST DOST YA Rİ HEY SUL TA Nİ MEN

BER ME Nİ MİS KİN NA ZAR KÜN EY Sİ RA CI PÜR Zİ YA

YAR YAR DOST DOST

YA Rİ HEY SUL TA Nİ MEN HEY HEY SUL TA Nİ MEN

HEY HEY HÜN KÂ RI MEN HEY HEY RA NA YI MEN

YAR YAR YAR YÜ RE ĞİM YAR

YAR YÜ RE ĞİM DEL Cİ ĞE RİM GÖR Kİ NE LER VAR AH

BA Zİ SERMESTEM Zİ BA LA Mİ RE SEM YAR YAR YAR  
VEZ CE MA Lİ HAK TE A LA Mİ RE SEM YAR YAR YAR



DER GÜ LİS TA Nİ Kİ CA Yİ MUS TA FA YAR



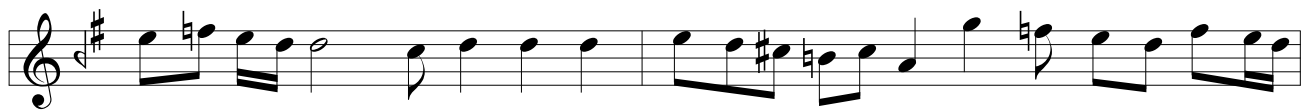
YAR YAR İN ÇÜ NİN GÜ YA VÜ BÜ YA



Mİ RE SEM YAR YAR YAR AH



HEY YAR EY YÜ HEL UŞ ŞA KI A TEŞ GEŞ TE ÇÜN İS



TA RE İM YAR YAR YA Rİ HEY SUL



TA NI MEN AH LÂ CE REM RAK SAN HE ME ŞEB



GİR Dİ AN MEH PA RE İM YAR YAR



YA Rİ HEY SUL TA NI MEN AH HER SE HER PEY GA MI İN PEY



GAM BE Rİ HU BAN RE SED YAR YAR



YA Rİ HEY SUL TA NI MEN KES SA LÂ EY A ŞI KAN MA



A ŞI KAN RA ÇA RE İM YAR YAR



YA Rİ HEY SUL TA NI MEN AH MUT RI BA ES RA RI MA RA



BAZ GÜ KIS SA HA YI CAN FE ZA RA BAZ GÜ

MAH ZE Nİ İN NA FE TAH NA BER GÜ ŞA SIR RI CA NI  
 MUSTAFA RA BAZ GÜ AH ÇÜNSALÂHADDİNSALÂ HI CAN HASTÇÜNSALÂ HAD  
 DİN SA LÂ HI CAN HAST TA SA LÂ HI CAN HA RA  
 BAZ GÜ TA SA LÂ HI CAN HA RA BAZ GÜ

### İKİNCİ SELÂM

EVFER

AH EY TA TA İ RA NI  
 A BI BI HA YAT A  
 KUD Sİ RA AH AŞ KAT  
 MED SE HUN AH KÂ YED  
 KAT FÜ ZÜ ZÜ DE BÂL  
 YED Zİ İL İL Mİ MİN  
 BAL HA AH DER HAL  
 MİN LE DÜN AH CAN RA



KA EZ      Ì SEV O HA      DA LÌ      YI TÛ ME KÛN



AH AH      RÛ TA      HA BER      HA BER      NÌ YAN DÌ HED



YAN HED      RA A'      HAL MÂL      HAL MÂL      HA HA



AH      MAH      BU      BU      BÌ MEN



AH      MAT      LÛ      LÛ      BÌ MEN



AH      MER      GÛ      GÛ      BÌ MEN



AH      MAK      BÛ      BÛ      LÌ MEN



DEVİR-i KEBİR

A Şİ KAN DER KÛ Yİ CA NAN  
 ES SA LÂ BE Lİ YA Rİ MEN DOST  
 SÛ Yİ AN HUR Şİ Dİ TÂ BAN  
 ES SA LÂ BE Lİ YA Rİ MEN DOST  
 ŞEM Sİ TEB Rİ Zİ Zİ BA LA  
 Yİ FE LEK BE Lİ YA Rİ MEN DOST  
 HER ZE MA Nİ Mİ KE ŞED HAN  
 ES SA LÂ  
 YA Rİ YAR EY Kİ HE ZAR A FE RİN AH  
 DOST DOST HER Kİ BU GÜN VE LE DE AH  
 BU Nİ CE SUL TAN O LUR AH KU LI O LAN  
 İ NA NU BEN YÜZ SÜ RE AH YOK SUL İ SE  
 Kİ Şİ LER CA NİM HUS RE VÜ HA KAN O LUR  
 BAY O LUR CA NİM BAY İ SE SUL TAN O LUR

YA Rİ YAR HUS RE VÜ HA KAN O LUR  
YA Rİ YAR BAY İ SE SUL TAN O LUR

EY Mİ Rİ A Bİ BÜĞ ŞA AN ÇEŞ ME İ RE VAN RA  
TA ÇEŞ ME HA GÜ ŞA YED ZİŞ KÛ FE BÛ Sİ TAN RA  
MA SÛ Fİ YA Nİ RA HİM MA TAB LA HA Rİ ŞA HİM  
PA YEN DE DA Rİ YA RAB İN KÂ SE RA VÛ HAN RA

MEV Cİ A CEB BİN Kİ HAS TI EZ Dİ Lİ DER YA Yİ AŞK  
REF Tİ BE BA LÂ Kİ Hİ Nİ BİN GE Rİ BA LÂ Yİ AŞK  
BÛ Dİ VE LED BA KA Dİ Mİ Pİ Şİ Zİ A LEM NE DİM VAY



HOR DE Zİ CA MI BE KA Bİ LE Bİ DER YA YI AŞK  
YAR YAR YAR YÜ RE ĞİM YAR  
DOST DOST DEL Cİ ĞE RİM VAY  
YAR YÜ RE ĞİM DEL Cİ ĞE RİM GÖR Kİ NE LER VAR YAR YÜ RE ĞİM  
DEL Cİ ĞE RİM GÖR Kİ NE LER VAR YA RE HA BER VAR  
MA  
MES TÜ HA RAB EZ PE Yİ MA ŞU Kİ E LES TİM MA  
MES Tİ E LES TİM ÇÜ MA ŞU Kİ PE RES TİM MES  
TA NI HA RA Bİ Mİ Bİ GŪ Pİ Rİ HA RA BAT TA  
BA DE Bİ YA REN Dİ Kİ MA A ŞI KI MES TİM  
GŪF TE Mİ DŪ Şİ AŞ KI RA EY TŪ KA Rİ NŪ YA Rİ MEN VAY  
Hİ Çİ ME BA Şİ YEK ZE MAN GA İB E ZİN KE NA Rİ MEN VAY



İN TE Nİ MEN HA RA Bİ TŪ Dİ DE İ MEN SE HA Bİ TŪ VAY  
ZER RE İ A Fİ TA Bİ TŪ İN TE Nİ Bİ KA RA Rİ MEN VAY  
MŪR DE BŪ DEM Zİ BU Yİ TŪ ZİN DE ŞŪ DİM ŞEM Sİ DİN VAY  
EY TŪ HA YA TI CA NI HA EY ŞE Hİ KÂ Mİ GÂ Rİ MEN VAY

### DÖRDŪNCŪ SELÂM

EVFER



SUL TA NI ME Nİ  
SUL TA NI ME Nİ  
AH EN DER Dİ LŪ CAN  
CAN İ MA NI ME Nİ  
AH DER MEN Bİ DE Mİ  
MEN ZİN DE ŞE VEM  
AH YEK CAN Çİ ŞE VED  
VED SAD CA NI ME Nİ

# SON PEŞREV

DÜYEK

The image displays a musical score for a piece titled "SON PEŞREV" in the "DÜYEK" style. The score is written on 11 staves of music, all in G major (one sharp) and 2/4 time. The notation includes various rhythmic values such as eighth, sixteenth, and thirty-second notes, as well as rests and accidentals. The piece concludes with a double bar line and a final cadence symbol.

# SON YÜRÜK

YÜRÜK SEMÂÎ

The musical score for 'SON YÜRÜK' in 'YÜRÜK SEMÂÎ' style is presented in eight staves. The key signature is G major (one sharp) and the time signature is 2/4. The melody is written in a treble clef with a soprano clef (C1). The music features a series of eighth and sixteenth notes, with some rests and a final double bar line. The key signature is G major (F#) and the time signature is 2/4.