

# SULTÂNÎYEGÂH PEŞREV

DEVİR-İ KEBİR

Kâzım Uz



İkinci Hane



Üçüncü Hane



Dördüncü Hane



# SULTANIYEGÂH MEVLEVÎ ÂYÎN-I ŞERÎF'İ

DEVİR-İ REVAN

Kâzım Uz

AZ Mİ AN DAREM Kİ MİH MA NET KÜ NEM YAR  
YAR YAR YA Rİ YA Rİ MEN  
CA NÜ DİL EY DOST KUR BA NET KÜ NEM YAR  
YAR YAR YA Rİ YA Rİ MEN AH  
BAH ŞE MET SAD CA Mİ VAH DET DEM BE DEM YA Rİ  
YAR YAR YAR YA Rİ MEN  
EZ ŞE RA Bİ ŞEV Kİ MES TA NET KÜ NEM YAR  
YAR YAR YAR YA Rİ MEN  
DOST DOST YAR YA Rİ MEN  
GER YA KİN DA REM Kİ BER ME Nİ A ŞI KI YAR  
YA Rİ YA Rİ MEN EZ CE MA Lİ HİŞ HAY RA  
NET KÜ NEM YA YA Rİ YA Rİ MEN AH

BER TE VEK KÜL HEM ÇÜ İB RA HİM BAŞ  
YA Rİ YA Rİ MEN A TE Şİ NEM RUD REY HA  
NET KÜ NEM YAR YA Rİ YA Rİ MEN AH  
DOST DOST YA Rİ YA Rİ MEN  
GER TÜ TER Kİ SER KÜ Nİ MES TA NE BAŞ YAR  
YAR YA Rİ MEN TA CÜ İS MA İL KUR BA  
NET KÜ NEM YAR YA Rİ YA Rİ MEN AH  
KÜ Yİ KA FET RA NÜ MA YEM A Sİ YA YA Rİ  
YA Rİ YA Rİ MEN AB A REM ÇER Hİ GER DA  
NET KÜ NEM YA Rİ YA Rİ YA Rİ MEN YAR YÜ RE ĞİM YAR  
DEL Cİ ĞE RİM VAY YAR YÜ RE ĞİM DEL Cİ ĞE RİM  
GÖR Kİ NE LER VAR YA RE HA BER

## İKİNCİ SELÂM

EVFER

VAR SUL TA NI ME Nİ  
AH SUL TA NI ME Nİ  
AH EN DER Dİ LÜ CAN  
CAN İ MA NI ME Nİ  
AH DER MEN Bİ DE Mİ  
AH MEN ZİN DE ŞE VEM  
AH YEK CAN Çİ ŞE VED  
AH SAD CA NI ME Nİ  
AH A A Şİ KAN  
KAN EY A A Şİ KAN  
( Saz ) MEN HA Kİ RA GEV  
HER KÜ NEM DOST AH EY MUT

MUT RI BAN BAN EY MUT

MUT RI BAN (SAZ) DEF Fİ

ŞÜ MA PÜR ZER KÜ NEM DOST

14/4

DEVİR-İ KEBİR

Mİ GÜ ZEŞ TEM SUB HU DEM DER  
 AR SA İ BA ZAR MEST  
 A Rİ Fİ Dİ DEM RE VAN DER  
 HA NE İ HAM MA Rİ MEST  
 ŞEM Sİ TEB Rİ Zİ DÜ BEYT EZ  
 HAK TE A LÂ BAZ GÜ  
 A KI LAN EZ AK LÜ MES TÜ  
 CA HİL EZ KİR DAR MEST



EY Kİ HE ZAR A FE RİN DOST BU Nİ CE SUL  
HER Kİ BU GÜN VE LE DE DOST İ NA NU BEN



TAN O LUR KU LI O LAN Kİ Şİ LER  
YÜZ SÜ RE YOK SUL İ SE BAY O LUR



AH HUS RE VÜ HA KAN O LUR AH  
AH BAY İ SE SUL TAN O LUR AH



HUS RE VÜ HA KAN O LUR  
BAY İ SE SUL TAN O LUR



FİR KA Tİ MİH Rİ RU HAT EY ŞEM İ Dİ LA RA EZ



FİR KA Tİ MİH Rİ RU HAT EY ŞEM İ Dİ LA RA LA



AS Bİ RU MİN ŞEV Kİ KE LEY LEN VE NE HA RA LA



AS Bİ RU MİN ŞEV Kİ KE LEY LEN VE NE HA RA CA



NEM BE LEB A MED Zİ TE MEN NA Yİ Vİ SA LET CA



NEM BE LEB A MED Zİ TE MEN NA Yİ Vİ SA LET YA



FEV ZE MEN İS TEV TA NE DA REN LE KE CA RA YA



FEV ZE MEN İS TEV TA NE DA REN LE KE CA RA



BİL



LÂ Hİ A LEY KE YA NE Sİ MES SE HE Rİ



YAR YAR YA Rİ YA Rİ MEN GER



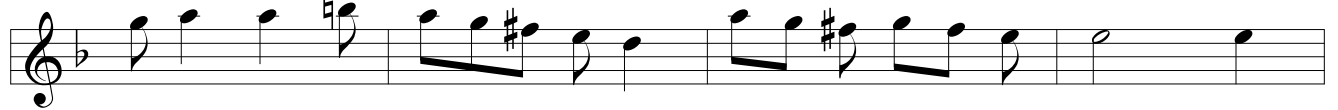
BER SE Rİ BA Mİ YA Rİ MEN Mİ GÜ ZE Rİ AH



YAR YAR YA Rİ YA Rİ MEN BEL



LIĞ LI TE HIY YE Tİ VE KUL YA KA ME Rİ



YAR YAR YA Rİ YA Rİ MEN MEN



HÂ Kİ ŞÜ DEM Zİ HİC Rİ TÜ BÎ HA BE Rİ AH  
 YAR YAR YA Rİ YA Rİ MEN

### DÖRDÜNCÜ SELÂM

EVFER

SUL TA NI ME Nİ  
 AH SUL TA NI ME Nİ  
 AH EN DER Dİ LÜ CAN  
 CAN İ MA NI ME Nİ  
 AH DER MEN Bİ DE Mİ  
 AH MEN ZİN DE ŞE VEM  
 VEM YEK CAN Çİ ŞE VED  
 VED SAD CA NI ME Nİ

## SON PEŞREV

DÜYEK



Musical score for SON PEŞREV, DÜYEK. The score is written in treble clef, 2/4 time signature, and B-flat major. It consists of eight staves of music. The first staff begins with a treble clef, a key signature of one flat, and a 2/4 time signature. The music is a single melodic line. The second staff continues the melody. The third staff continues the melody. The fourth staff continues the melody. The fifth staff continues the melody. The sixth staff continues the melody. The seventh staff continues the melody. The eighth staff concludes the piece with a double bar line and a repeat sign.

## SON YÜRÜK

YÜRÜK SEMAİ



Musical score for SON YÜRÜK, YÜRÜK SEMAİ. The score is written in treble clef, 2/4 time signature, and B-flat major. It consists of three staves of music. The first staff begins with a treble clef, a key signature of one flat, and a 2/4 time signature. The music is a single melodic line. The second staff continues the melody. The third staff concludes the piece with a double bar line and a repeat sign.